

# Highlights 2019

News from iNELS & ELKO EP World.



[www.elkoep.com](http://www.elkoep.com)

The logo for iNELS, featuring the word "iNELS" in a bold, white, sans-serif font with a yellow square above the "i".

**iNELS**<sup>®</sup>

## NEWS

- **iNELS Smart City**

- **iNELS Air**

- Examples of iNELS Air Products Portfolio

- **Smart Pole**

- Description of the Smart Pole

- **Smart street lighting**

- SSL controllers | SSL platform

- **Building Management System**

- **ELKO Cloud**

- **Hospitality solution**

- **New products**

- iNELS BUS, iNELS Air  
iNELS RF Control, RELAYS

- **Apps for all...**

[www.inels.com](http://www.inels.com)



# CONTENTS

## HIGHLIGHTS 2019

- Products Portfolio 4-5
- iNELS City... Smart City 6-7
- iNELS Air 8-9
  - Examples of iNELS Air Products Portfolio
- Smart Pole 10-11
  - Description of the Smart Pole
- Smart street lighting 12-13
  - SSL controllers
  - SSL platform
- Building management system 14-15
- iNELS BUS for iRidium mobile 16
- ELKO Cloud 17
- Hospitality Solution 18-19
- New products 20-22
  - iNELS BUS, iNELS Air
  - iNELS RF Control, RELAYS
- APPS FOR ALL... 23
- References 24-26



### Smart City

**9** **Ymij YWa V]bU]cb'cZY'Ya Yblg]blc'cbYi b]h**  
 K Yc Yf bchcb'nih Ydfc Xi WgVi hUgc hYhWbc'c[ mihUh  
 UfY'hY'VUg]g'cZYj YfmiGa Ufh7]hmi'K \Yh Yf'ga UfhVi ]X-  
 ]b[ gzi fVUb Z fb]li fYZU]f WbX]h]cb'a cb]lcf]b[ 'cfk YUh Yf'  
 a cb]lcf]b[ 'UbX'Ybj ]fcb'a YbhU'UgdYVg'fUbxg'XYgz'k Uhyf'  
 'Yj Y'gz'g'c'Wgl' "DUfh'cZ'h'Y'Ga Ufh7]hmid'U'Zc'fa ' ]g'h'Y'  
 Y YWij Ya UbU] Ya YbhUbX'dYfa UbYbhgi dYfj ]glcb'cZU''  
 Y'Ya Yblg]b'h'YG7''c'W]h'cb'" ... see page 6-7



### Smart Pole

**Ugh YVUgW]l'U'f'cZU'ga UfhW]mi**  
 H'Y'dc'Yg'cZdi V]W]l[ \h]b[ z'cZk \]W'h'YfY'UFY'U'ch]b'  
 Yj YfmiW]mz'Wb'Ugc'Wffmih'Y'bYWggUfmi'hYWbc'c[ mihUh  
 UfY'fYeI ]fYX' ]b'h'Y'V]m'WUf[ Yfgz'Wa a i b]W]l'cf'gz'U]f'  
 ei U]h'z'Ya Yf[ YbW]vi H'cb'z'hc' i W'dUbY'z'K ]:' ]" ... see page 10-13

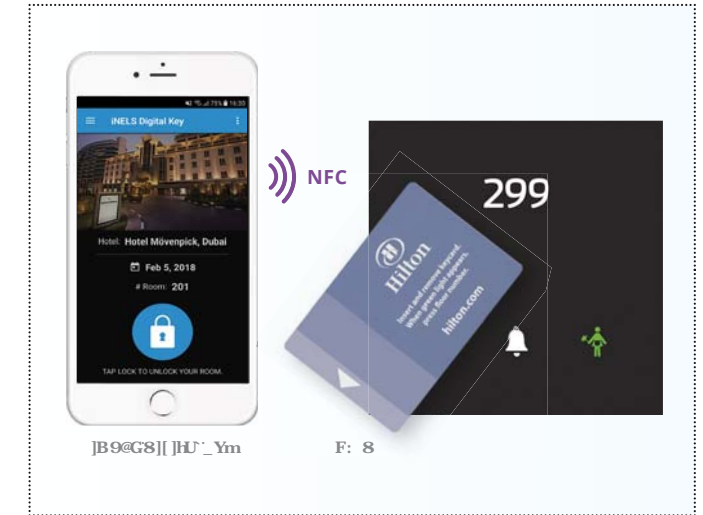


### iRidium mobile

**Create app as you wish**  
 ]F]X]i a 'gcZ'k UfYgc' i h]cb'YbUV'Yg'Wb]h'c' ]b[ 'cZ'h'Y']B9@G  
 \ca'Y'Ui' lca' U]h]cb'gng]h'Ya 'Ug'k'Y''Ug'c'h'Yf'' fX'd'Uf]h'Yg'  
 XYj ]Wg'f]i X]c' # ]XYc'XYj ]Wg'z'a YX]U'g'Yf]j Yfg'k ]h'Z' ''h'k'c'  
 k Um]Wa a i b]W]h]cb'E'" ... see page 16



**†Ez4 ÷ · f Ç ÷**  
**FYg]cbX]b[ 'c'h'YX]b'Ua ]W'n]X]j Ycd]b[ ''cHbY'k'cf\_**  
 H'Y' bhYfbYhcZ'h ]b[ g'z'cf' 'cH'z'fYdfYgYb]g'U'Wb'Wdh'cZ'  
 W'bb'YW]b[ 'Udd']Ub'Wg'z'a UW ]b'Yg'z'g'Wbb'Yf'gz'Yh'Wz' ]b]c' 'Ub'  
 Yl ]gh]b[ 'bhYfbYh]g]f' W'i'fY''H' ]g'g]f'i W'i'fY'i' gY'g'dYV]U'm  
 XYg]l[ bYX'bY'k'cf\_g'z'c'f'h'Ubg'Z'f]f]b[ 'ga'U''j'c'i'a' Yg'c'Z'X'U'U'  
 k ]h' 'ck'YbYf[ m]W'b]gi a dh]cb'c'j Yf[ fYU'hX]g]h'Ub'W'g'" ... see page 8-9



### iNELS Digital key

**I b'c'W'nei f'fcca j ]U'a cV]Y**  
 b'Y'g'8 ]l ]hU'?'YmiUdd'd'f'c]j ]XY'nei 'b'ck' 'd'cgg]V]l'm]c'Z'cd'Yb'  
 nei f'X'c'f'j ]U'nei f'ga' Ufh'd'cb'Y'k ]h' 'B: 7''5dd'Ya i 'U'h'  
 F: 8'W'f'X' 'h'Yb'nei 'Wb'i'g'Y'Z'c'f'X'c'c'f'i b'c'W]b[ 'V'ch'  
 k Um'W'f'X'Ub'X'f'd'cb'Y''A U]b'Z'U'h'fY' ]g'Yb'f'Ub'W'nei f'  
 f'cca'k ]h'c'i' h'fY'W'd]h]cb'W'Y'W]! ]b'f'b' ]b'Y'W'Y'W'Y'X'Ub'X[ 'c'  
 h'c'h'Y'f'cca' X]fY'W'ni'"'"' ... see page 18-19



**† ·**  
**iNELS BUS, iNELS Air, iNELS RF Control, Relays**  
 FY'YUg]b[ 'cZ'bYk' 'dfc'Xi Wg' ]b'WYUg'Y'Z' b'W]c'b'U]h'z'g]a' d' ]W'  
 ]h'U'b'XY' YWij ]h'c'Z'nei f' ]b]g]U'U'h]c'bg'"H]a' Y'W'c'W'g'Y'h]j ]U'  
 Udd'z'W'a dU]h]V]l'h'mk ]h' ; c'c[ 'Y'c'f'5'a UnUb'cb'z'W'a dUW'i  
 Wb]f'U' i b]h]z'f'6I' G]b]g]U'U'h]c'c'f'Ga' Ufh'd'c'Y'U'g'U' ]l[ \ ]h'  
 Z'c'f'ga' Ufh'W]m]g'd'f'c'c'Z'c'i' f'd'f'c[ fYgg' ]b'h'Y'h'W'bc'c[ ]W'  
 d'f'c'Xi W'iX]j Y'c'd'a' Ybh'" ... see page 20-22



# Products Portfolio

## Wireless electroinstallation



The system uses wireless communication between devices. The installation itself is variable thanks to this communication and can be gradually expanded.

## Wired electroinstallation



Installation for new installations (refurbishment) in family houses, hotels and villas for both automation and comfort.

## Energy management



Measuring energy consumption in the home or in larger areas is an increasing trend. Our products provide a variety of technologies - using a BUS or wireless system and thanks also with the IoT.

## Timers / Relays



Relays and timers for controlling various electrical loads, providing precise timing and automation for lighting, heating, and other systems.

## MONITOR



Monitoring modules for real-time status checking and alerting, used for security, environmental, and system health monitoring.

## iNELS IoT



IoT-enabled devices for remote access, data collection, and integration with cloud services for advanced automation and analytics.

## Lighting control



Control over all lighting devices. From switching, dimming to controlling your favourite DALI luminaires. Everything can be controlled with a connection to iNELS wired or wireless technology.

## Multimedia



iNELS system and not just for it. Lara Music Players, Intercoms and Door Communicators, Application Communication Servers and 3rd party applications.

## Smart Pole



The poles of public lighting, of which there are a lot in every city, can also carry the necessary technologies - info-panels, radio, WiFi.

## iNELS HRESK



Advanced control and monitoring solutions for complex systems, offering high reliability and performance.

## iNELS GRMS



Control and monitoring solutions for industrial and commercial applications, ensuring precise operation.

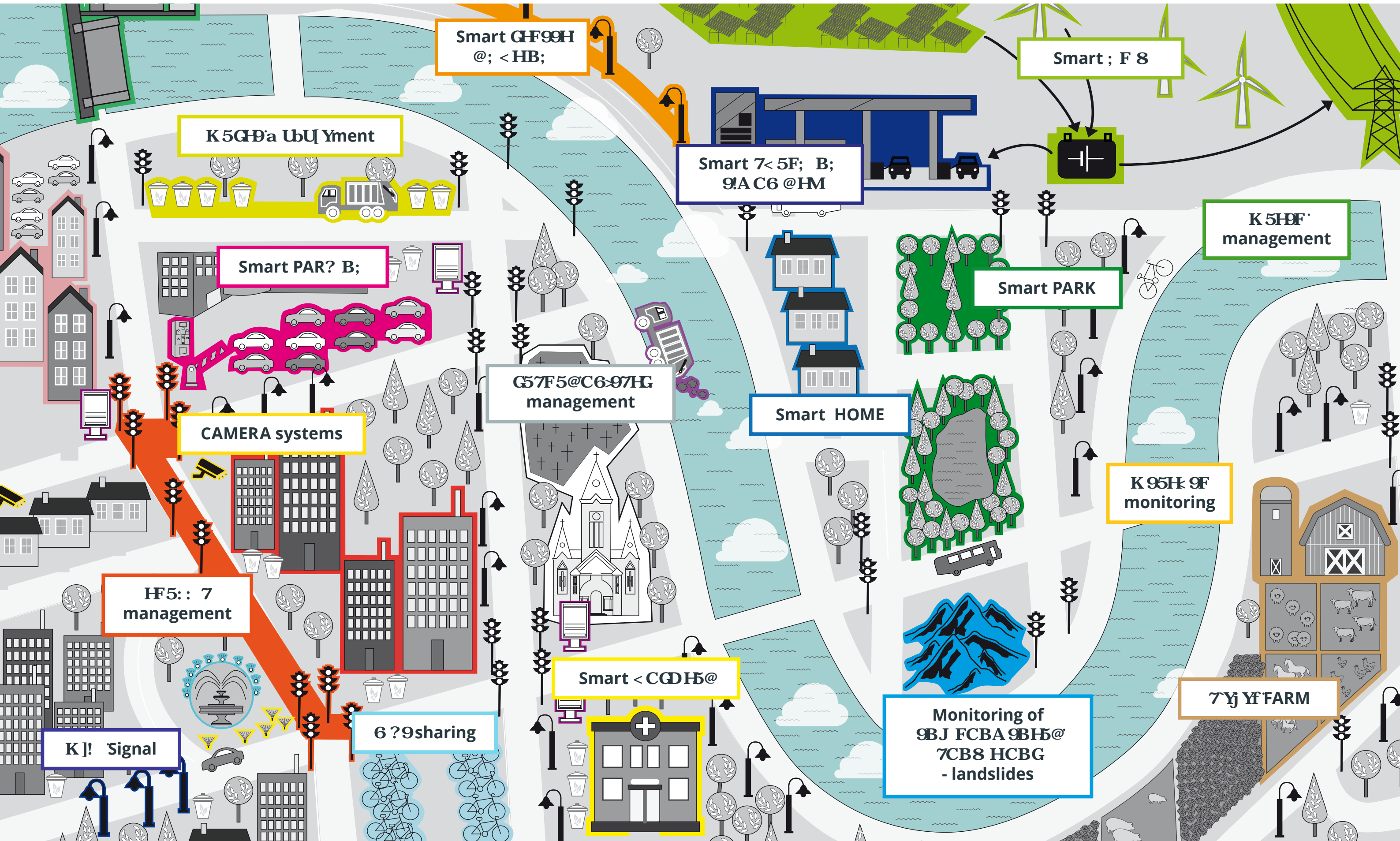
## iNELS BMS



Battery Management System (BMS) solutions for monitoring and controlling battery packs in various applications.



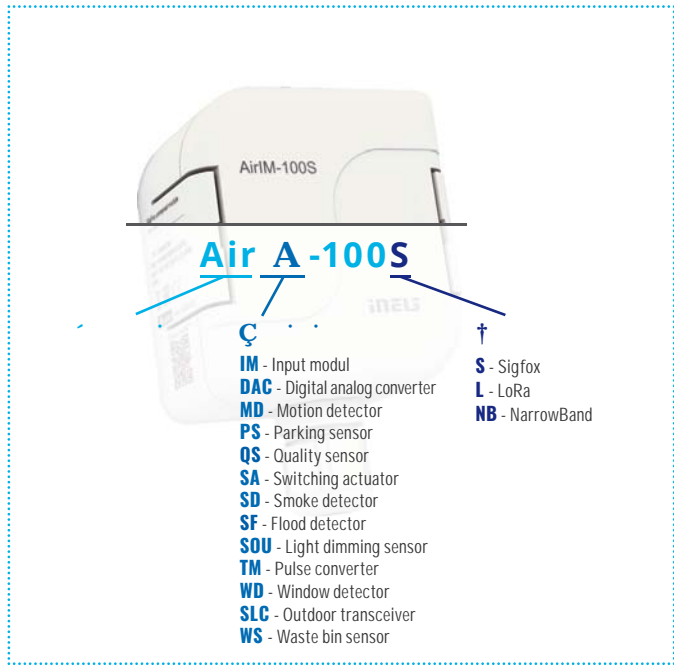
# iNELS Smart City



]B9@G'5]f'k Ug'XYg[] bYX' ]b'fYgdcbgY'hc' h'Y'XnbUa' ]W'miXY-  
 j'Ycd]b[ 'bYhk cf\_ 'Zf' cHfbhYfbYhcZH ]b[ g' H'Y' cHk ]fY-  
 'Ygg' W'a a i b]W]hcbg' W]hY[ cfmiXYgW]VYg' h'Y' @ck 'Dck Yf'  
 K ]XY'5fYU'f@DK 5L' H' ]g' h'YWbc' c[ m]g'XYg[] bYX'hc' d'fcj ]XY'  
 Z' 'Wj' YfU[ Y'Yj' Yb ]bg]XYVi ]X]b[ g'zk ]h' YbYf[ m]gUj ]b[ 'UbX'  
 'ck !WghicdYfU]hcb' cZ]bX]j ]Xi U'XYj ]Wg'

H'Y'dfcXi W]h[ fci d' ]bW' XYg'gYbgc'fg'Z'f' W'a a i b]W]hcb'cb'  
 h'Y'G[] Z'cl z@cFU'UbX'B6! cHdfch'W' '@b\_]b[ ]gYbgc'fg'k ]h'  
 9@?C'7'ci X'UbX' : HHHfZH ]g'H' Yb H'U]h]g]XYU'Z'f'U'k ]XY'  
 fUb ]Y'cZUdd' ]W]hcbg'

7UH]c[ i Y]B9@G'5]f  
 Y\_cYd'W'a #download



|  |                             |              |                       |                        |
|--|-----------------------------|--------------|-----------------------|------------------------|
|  | f +                         | AirIM-100S   | AirIM-100L            | AirIM-100NB            |
|  | f + 9ft +                   | AirIM-100S/M | AirIM-100L/M          | AirIM-100NB/M          |
|  | -                           | AirTM-100S   | AirTM-100L            | AirTM-100NB            |
|  | "                           | AirMD-100S   | AirMD-100L            | AirMD-100NB            |
|  | " ÷                         | AirWD-100S   | AirWD-100L            | AirWD-100NB            |
|  | " ÷                         | AirWD-101S   | AirSF-101L            | AirWD-101NB            |
|  | X                           | AirSF-100S   | AirSF-100L            | AirSF-100NB            |
|  | 3/4                         | AirSD-100S   | AirSD-100L            | AirSD-100NB            |
|  | ° ÷ ° 3                     | AirQS-100S   | AirQS-100L            | AirQS-100NB            |
|  | ° ÷ ° 3                     | AirQS-101S   | AirQS-101L            | AirQS-101NB            |
|  | Ç                           | AirSOU-100S  | AirSOU-100L           | AirSOU-100NB           |
|  | 3/4 ° ° ° 9° z'             | -            | AirSLC-100L/DALI      | AirSLC-100NB/DALI      |
|  | 3/4 ° ° ° 9° z' 'z', ° ä° B | -            | AirSLC-100L/LWES/DALI | AirSLC-100NB/LWES/DALI |
|  | 3/4 ° ° ° ° ä 'z', ° ä° B   | -            | AirSLC-100L/LWES/0-10 | AirSLC-100NB/LWES/0-10 |
|  | 3/4 ° ° ° ° 9° z' '†B, ° °  | -            | AirSLC-100L/NEMA/DALI | AirSLC-100NB/NEMA/DALI |
|  | 3/4 ° ° ° ° ä '†B, ° °      | -            | AirSLC-100L/NEMA/0-10 | AirSLC-100NB/NEMA/0-10 |
|  | ÷                           | AirPS-100S   | AirPS-100L            | AirPS-100NB            |
|  | ä ÷                         | AirWS-100S   | AirWS-100L            | AirWS-100NB            |
|  | OEM module                  | -            | LoRa Modul OEM        | -                      |



# Smart pole

7UHc[i YGa UfhGfYYh@[\t  
Y\_cYd"Wa #download

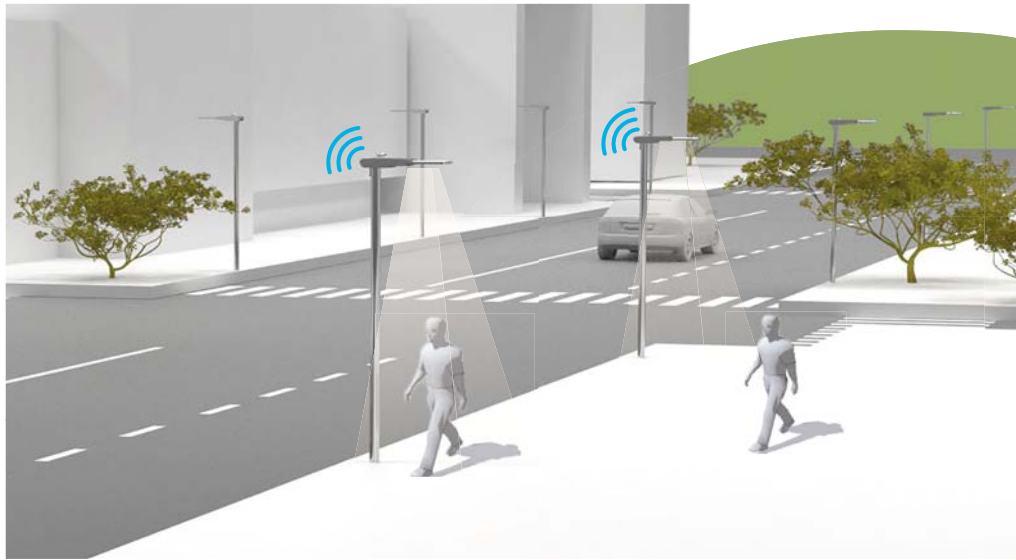


7cb [i fUrcf  
k k k "Wnfnng'ci d"Y\_cYd"Wa



b'Yj YfmV[[ 'Wmk Y Wb' bX' hci gUbXg'hcXUnz gca Yha Yg' Yj Yb' hYbg'cZhci gUbXg'cZdi V'WJ[[ \h]b[ 'dc'Yg' K Y Wb' i gY' h'lg' XYbgY' bYk cf\_ 'lc' ]bghU' gYbgefg' cf' gYWf]miWa YfUgz UbX'h'i g' ]bWYUgY' gYWf]miZ' f h'Y d'cdi 'Uhc'b" K Y [ U]b' ]bZ' f- a Uhc'b U'ci h'h'Y'bi a VYf'cZdYcd'Y'cf'j Y\ ]Wgzk Y Wb' Yj U- i Uh'Y' h'Y U]f' ei U]mic' f h'Y'bc ]gY' Yj Yz ]bZ' fa 'h'Y' ]b\ U]h'Ub'lg'

U'ci h'h'Y'gh'U' h' g'cZhfUb'gdcfh'UbX'dUf\_ ]b[ 'd'UWg" Dc' Yg' Wb' Ugc' VY' i gYX'Z' f' K ]!: ]g[ ]bUg'cf' fYWUf[ ]b[ 'g'Uhc'bg" Gc' k' Y \Uj' Y' U'Vgc' i h'Y' mi' b' ]a ]h'X' dc'gg[V'] ]h'Yg' 'lc' k' cf\_ 'k ]h' 'ga Ufh ][ \h]b[ z'UbX' ]hg' i d' h'c' h'Y' ]bj Yg' h'c' f' 'lc' ]a d'fcj Y' h'Y' ei U]mic' Z ]Z' ]b' h'Y' W]h'i



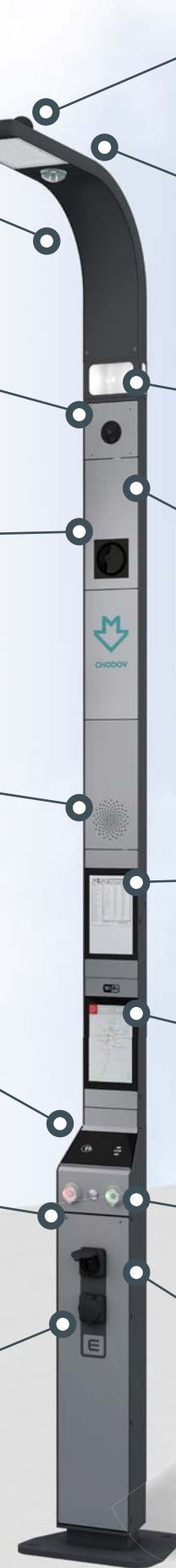
Charger



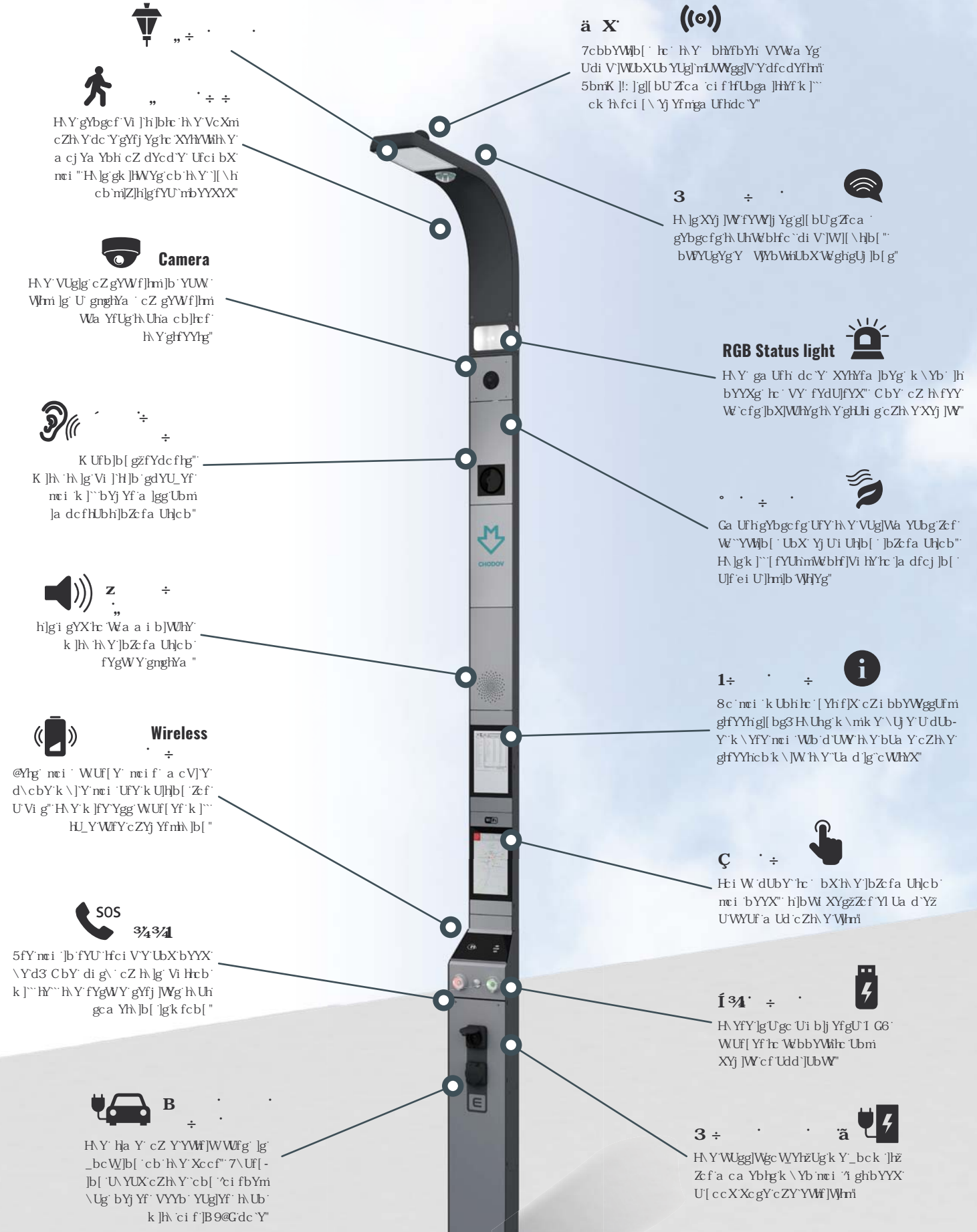
Kiosk



City



Street



# SSL controllers

He'a U\_Yga Ufh'[\h]b[ k cf\_ dfcdYf'nz'hY'][\h' h]b[ 'a i ghi VY'Yei ]ddYX'k ]h' U'Wa a i b]W]h]cb'a cXi 'Y' A cXi 'Yg'X]Z ZYf' ]b' XYgl[ bZ ]bg]U'Uh]cbZ UbX' Wa a i b]W]h]cb' bYk cf\_z Vi h'h Yf'Z bW]cb' ]g'U'k Ung'h'Y'gUa Y": cf'Wa a i b]W]h]cbZ k ]f'Y'gg' @DK 5B' bYk cf\_gZ YgdYVU'mi **LoRa** UbX' **B6! cFz** g'ci 'XVY'i gYX' H'YmU'ck **two-way** Wa a i b]W]h]cb'! h'Ym

Wb'bc'hc'b'm]W]b]f'c'Vi h'U'ge fYW]j Y]bZ'fa Uh]cb'Z'ca 'h'Y' ][\h' h]b[ g'H ]g]g'W]b]X]h]cb'U'cb'h'Y'U]U]V] ]m]cZU[ ]j Yb' bYk cf\_k ]h' g' V]Yb]h]g[ ]b'U'h'h'Y'dc ]b]h]k \Yf'Y'h'Y' ][\h' h]b[ g' Uf'Y' c'W]h]X' G[ ]b'U'ei U] ]m]W]b' VY'XY'h]fa ]b]YX' Vm UgdYVU'g[ ]b'U'g]f'Yb[ h' ]b]X]W]h]c'f'

## RETROFIT MODUL

5]fG@7!\$\$@p'5]fG@7!\$\$SBV

- Outputs: S fM1 %S J 8785@
- Outdoor enclosures with D\*
- Power supply: %S!& S J 57
- 8ja Ybg]cbg !% &1 \* &1 \* ( k ]h' Ub]h]bbU !- \* 1 \* &1 \* ( k ]h'ci h]Ub]h]bbU
- Communication: @FU#B6 cH
- Antenna: ]bW XYX



Ci h'X'cf'XYgl[ bZ'f'fYf'c hZ' d'U'Wa Ybh]Y h]f'f'U'nicb'h'Y'VeX'n cZ'h'Y' ][\h'z'a Ugh'c'VUg'Y'



## 'z]Z f'

### AirSLC-100/NEMA

- Power supply: 57%SS!& S J 57
- Output: S fM1%S J
- Communication: @FU#B6! cH
- 8ja Ybg]cbg; (1-, 'a a



### AirSLC-100/LWES

- Power supply: %S!& S J 87
- Output: S fM1%S J 85@
- Communication: @FU#B6! cH
- 8ja Ybg]cbg Ö, S1' ( 'a a



FYW]j Y'U'W] U'cf' ]b'U'g]Y'W]U' Vc'l k ]h' UVU'nc'b]Y'h]W]b]Y'W]c'f' for easy installation into lights equipped with this socket.



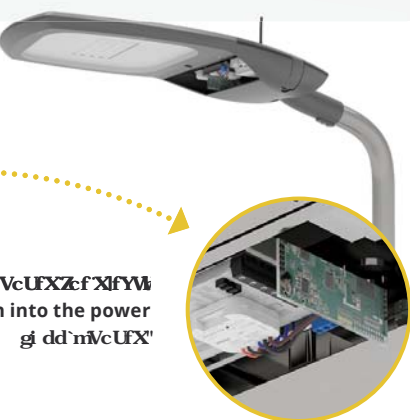
## 'B, ' B

### LoRaWAN Modul OEM

- Connection: ]g'c'XYf]b[ 'd]bg
- Power supply: ) !& J 87z]U'Z'Y'f'V'f'Y'U' ]b[ ]g'ci f'W'd'U'f]g'c'b'm ]g]U'V] ]h]X' J' #%( Sa 5\
- Communication: !'CD %' ' !'5b'U'c[ 'd]bg, ] f'f'Z'V] ]h' !'I G5FH% ' !' #C X] ]h]U' ]d]bg&1
- 8ja Ybg]cbg !% ) 1 ( \* % f ' ' , H 1 ( 'a a k ]h' I @ 'W]b]Y'W]c'f !% ) 1 ) + f ( ' + H 1 + 'a a k ]h' GA 5 'W]b]Y'W]c'f !% ) 1 ( \* % f ' ' z h 1 & % a a k ]h' ]b]h]f'f'U'Ub]h]bbU ] X]a Ybg]cb U'Z'Y'f'V'f'Y'U' ]b[ ]h' Y'g'ci f'W'g'Y'W]c'b ; U]b. Z' & % & X6
- Communication: @F5; \*, A \n
- Antenna: Y ]h]f'f'U' ] @ 'c'f'CA 5 'W]b]Y'W]c'f z ]b]h]f'f'U' V]Y]h]d'U'f]g'c'Z'h' Y'd'f'c'X] W]



D76'Ve'U'FX'Z'f'X]f'Y'W] integration into the power g' dd'n]v'c'U'FX'



# Smart street lighting platform

K Y'VY' ]j Y'h' Uh'Y'U'W' Ga Ufh'V]m]g' ]c'i 'X' \U] Y'c'b'nicb'Y'W]b' f'c' 'd' U'h]z'fa ' ' h'U'ck g'bc'hc'b'm]h'Y'W' 'Y'W]cb' UbX' Y] U'i U' h]cb' c'Z'X'U'U'Z'Vi h'U'ge 'h'Y'W]b]f'c' c'Z'U' 'h'Y'Y'Ya Ybh]g'c'Z'h'Y' ga Ufh'V]m]h' H'U'g'k \mik ]h' 'ci f'ga Ufh' ][\h]b[ z'ne'i ' 'U'ge' [ Y'h' ][\h'W]b]f'c' 'a cXi 'Y'

5' 'ga Ufh]g]f'Y'h' ][\h]g'U'f'Y'W]b]b]Y'W]X'h'c' Ga Ufh'V]m]d' U'h]z'fa ' k ]f'Y'Y'gg' 'n' h' [ ]j Y'g' 'ne'i ' Ub' Y'U'g'nik U'm \c'k 'h'c' W]b]f'c' UbX' a c]b]h'c'f'U' 'h'Y' ][\h]g' ]b' h'Y'W]m]

I G9F: F 9B8@M@5H CFA

cb'nei f'Wa di h]f'cf' U'd]h'c'd

9: 97HJ9F9DCFHB; HCC@G

; fUd'gZ'X'U'U'UbX'g]U] ]b[ 'Ub'U'ng]g

DF989 B98'G9HBB; G

Z'f'Y'U'g'ni'UbX'ga Ufh' ][\h]b[ 'UbX' Yb]Yf[ ]ng]U] ]b[ g

'58J5B798'8 AA B;

g'W]Y'X]i 'Y'X]a ]a ]b[

'G97I F HM

k ]h' ]d'f'cd'Y'f'UbX'g]U'Z'U' h'c'f' ]h]U]h]cb

; DG89H97HCB

Z]g]h]f'k U'm]c'k 'h'c' b'X'U'XY'Z'W] c'b'h'Y' ][\h]g

'7CGHF98I 7HCBG

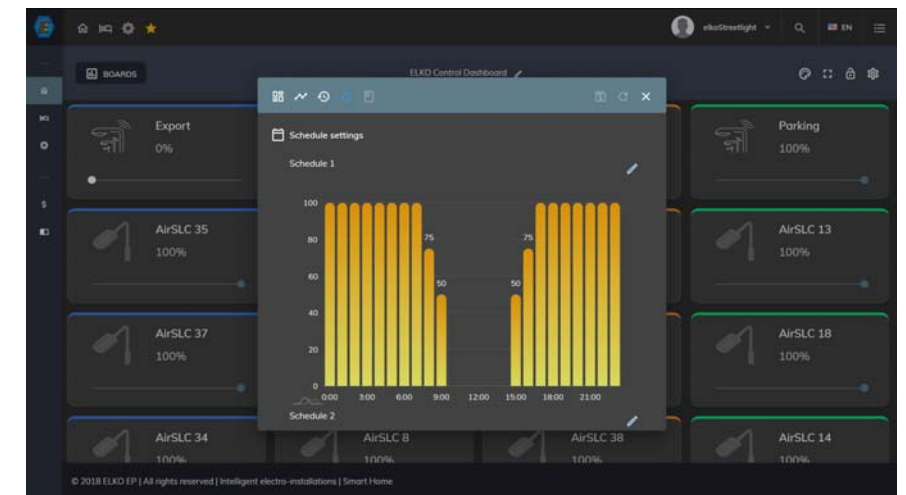
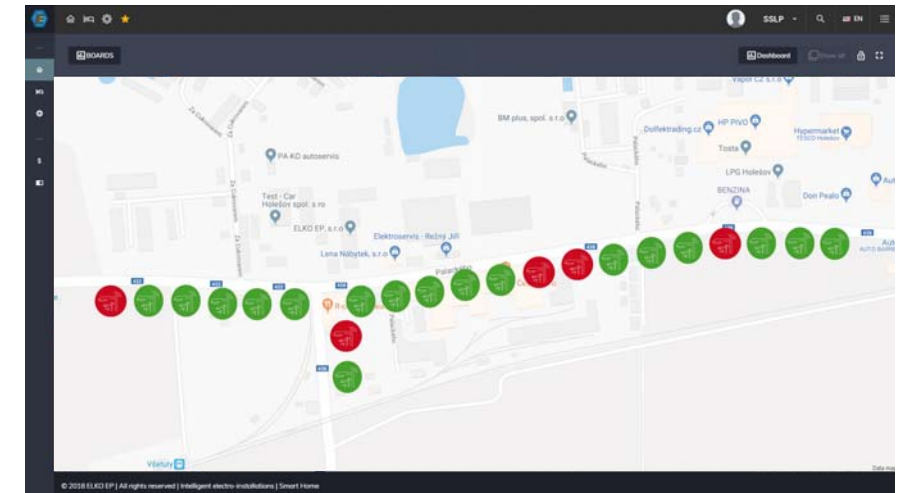
k ]h' b'Y'k 'k cf\_ ]b[ 'a Ub]U'Ya Ybh

F958M CF' cH

]h]g'W]b]b]Y'W]j Y'm'f'Y'U'X'm

K F9@GGCC@ HCB

Y'U'g'ni'c' i d[ f'U'X'Y'k \Y'b]Y] Y'f'ne'i 'k Ubh



### System cooperation:

- changes in intensity occurrences
- plan switching events occurrences
- adding / changing / removing the lamp occurrences
- emergency situations
- 3rd parties commands

### Reporting:

- consumption reporting
- operation reporting
- disorder reporting
- service state reporting

### Function:

- displayed on the map according to the light
- monitoring according to operating status
- individual and group control
- graphs and statistics according to lighting, consumption, lifetime



# Building management system

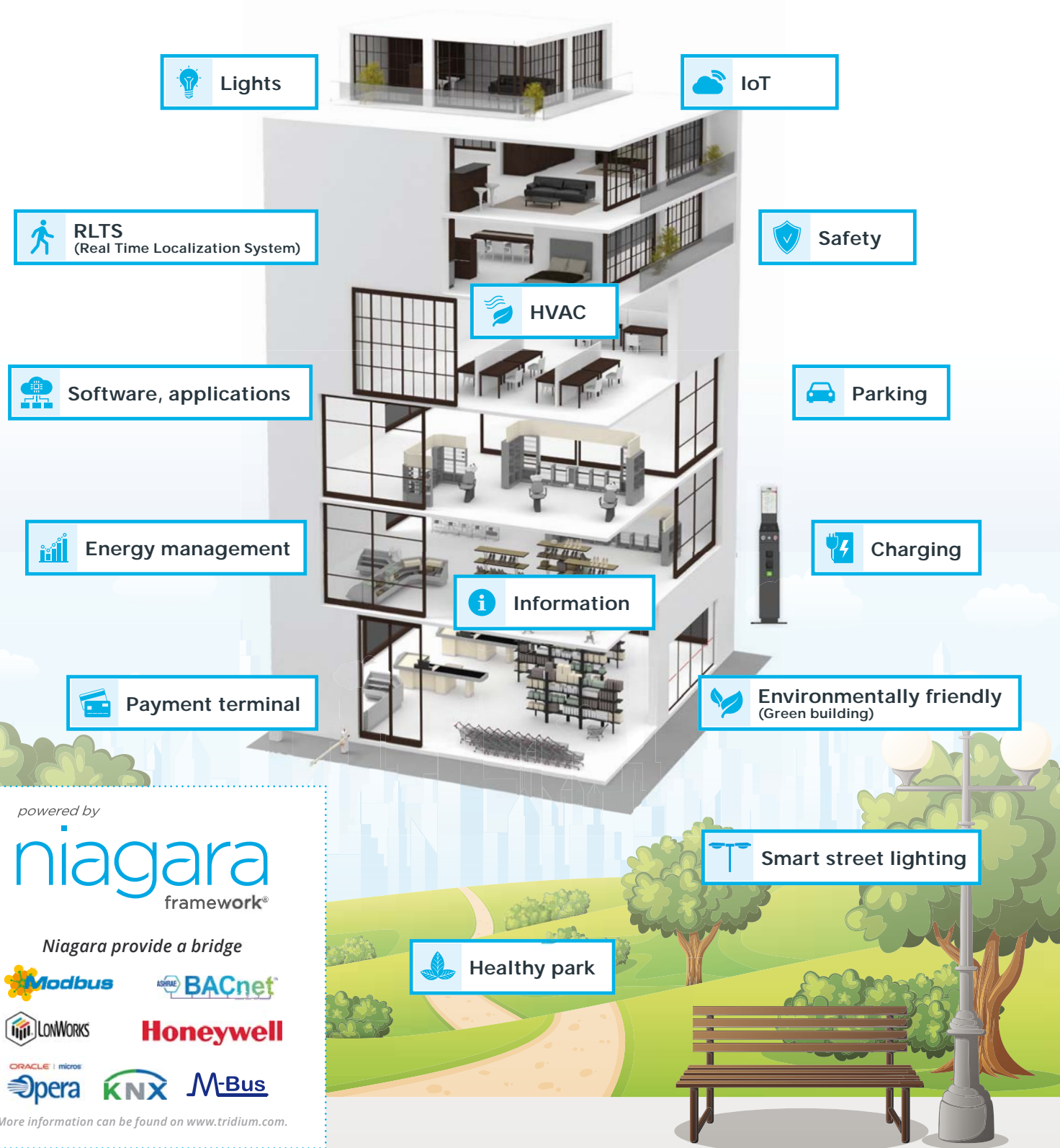
7UHc[i Y bhY] YbhYYWfc!] bghUUhcb.  
Y\_cYd"Wa #download



6A G'lg'UgcZk UFY'Ybj fcb a Ybh]b'k \jW ]h]g'dcgg]VY'rc 'WY-  
UH'a i li U'fYUhcbgzj ]gi U]nY'hY'UM]j ]lmcZVi ]X]b[ g'hW-  
bc'c [ ]Ygz'W''Ym]gh]h]ghW' XUH'UbX'Yj Ui UH' h'Ya "' b'h]g'  
k Uminci 'Wb' bX'cd]h a U'Vi ]X]b[ 'gY]h]b[ 'g'rc' Ybgi fY'i gYf'  
W'a Zcfh k \]Y' ]bWYUg]b[ 'h'Y' YbYf[ midYfZ'fa UbW' cZ'hY'  
Vi ]X]b[ "' h]bhY[ fUH'gU' h'Y'hWbc'c [ ]Yg]b h'YVi ]X]b[ 'UbX'  
j ]gi U]nY'g'h'Ya Zcf'h'Y'cdYfU'rcfg'UbX'UXa ]b]g]fU'rcfg''

]B9@G' ]g'Z' 'miW'a dUH'VY' k ]h' '6A G' fBi ]X]b[ 'A UbU] Ya Ybh  
Gng]hYa EB ]U] UFU'd'UhZ'fa z'k \]W' d'fcj ]XYg'U'W'bj Yb]YbhUbX'  
Y' WYbhi gYf' ]bhYfZ]W'' H'YfY'UFY' W'bf'c''Yfg'Z'f'h'Y'UMi U'  
W'bf'c''cZU''d'fcW'ggYg' ]b'h'Y'Vi ]X]b[ "' Gi dYfj ]gcf' ]W'bgYg'  
Z'f'h'Y'XYd'cna Ybhcb'h'Y'cdYfU'rcfg'W'a di hYf'UFY'i gYX'rc'  
gi dYfj ]gY'h'Y'cdYfU'rc'cZ'h'Y'gng]hYa z'fYW]j ]b[ 'U'Ufa g'UbX'  
bch] W]h]cbg'UbX'Yj Ui Uh'cb'cZ' ]g'rcf]W' XUH'UbX' [ fUd'g''

powered by  
**niagara**  
framework®

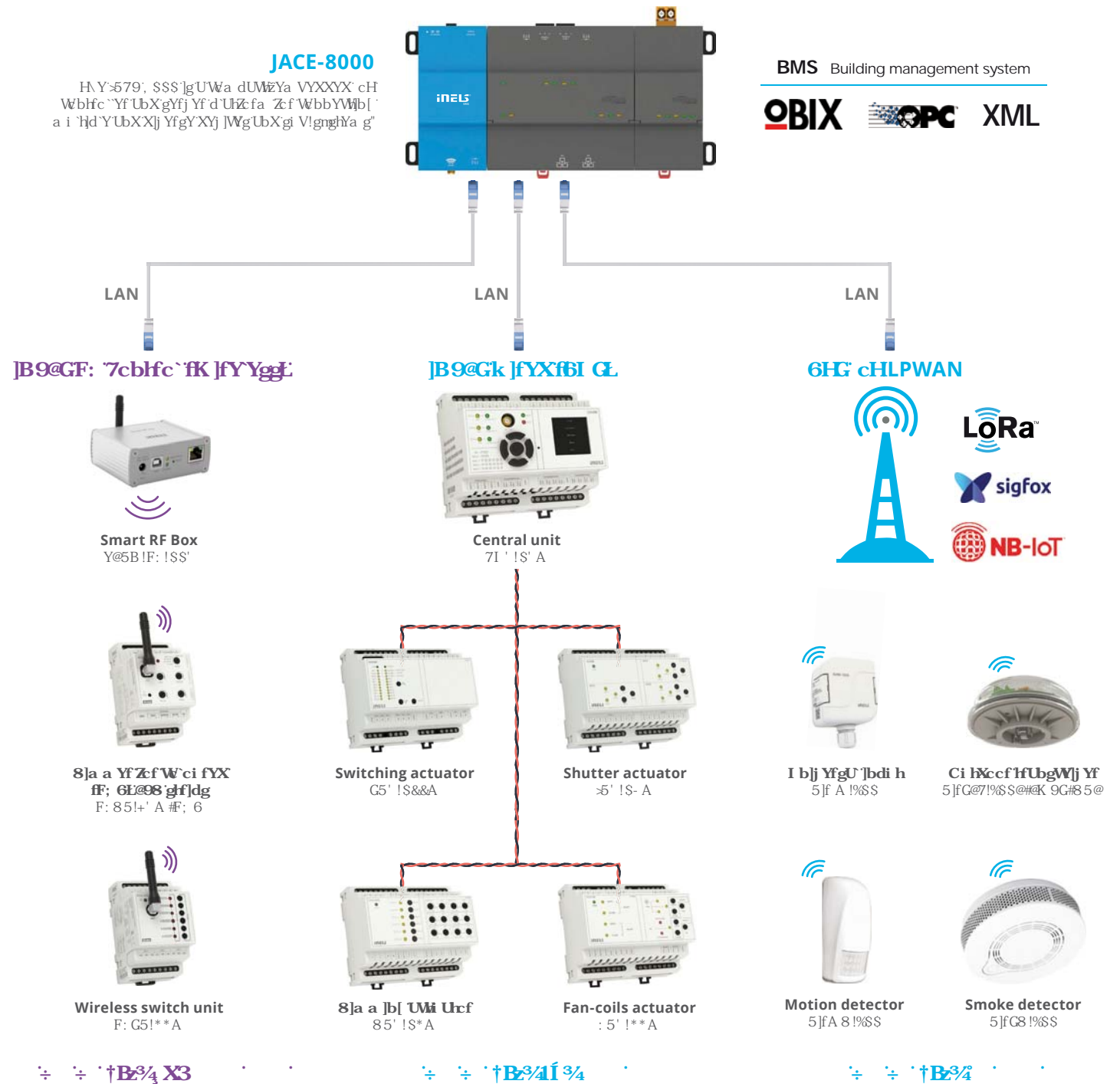


## JACE-8000

H'Y'579; SSS ]g'U'Wa dUM'Ya VYXXY' cH  
W'bf'c''Yf'UbX'gYf] Yf'd'UhZ'fa Z'f'W'bbY]b]b[ '  
a i 'hd'Y'UbX'X]j Yf'gY'X]j ]W'g'UbX'g] V]gng]hYa g''

BMS Building management system

**OBIX** **OPC** XML



powered by  
**niagara**  
framework®

Niagara provide a bridge



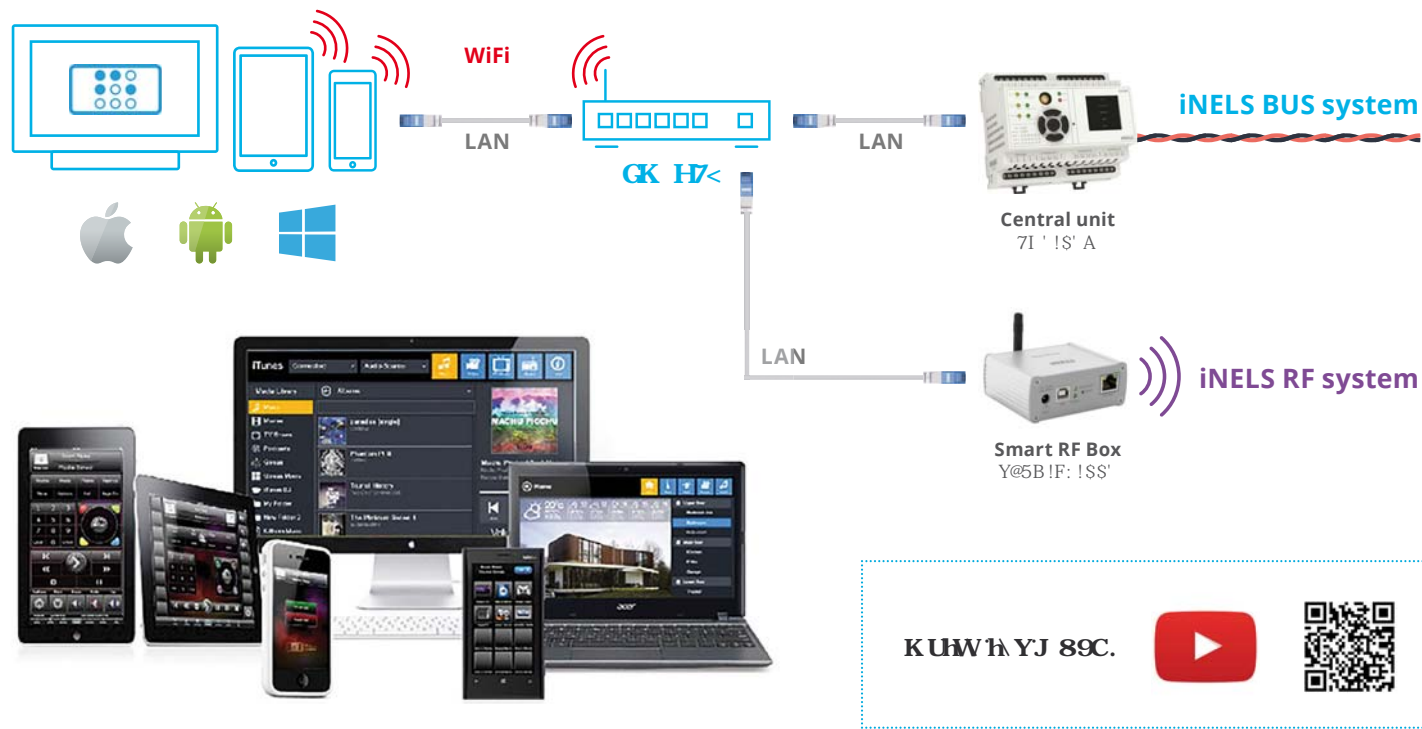
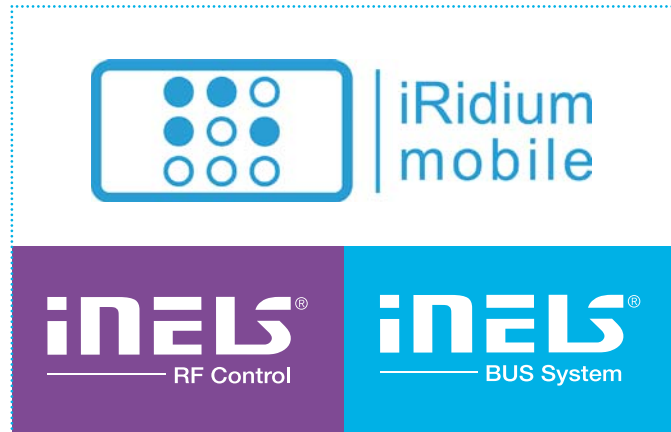
More information can be found on [www.tridium.com](http://www.tridium.com).



# iNELS BUS for iRidium mobile

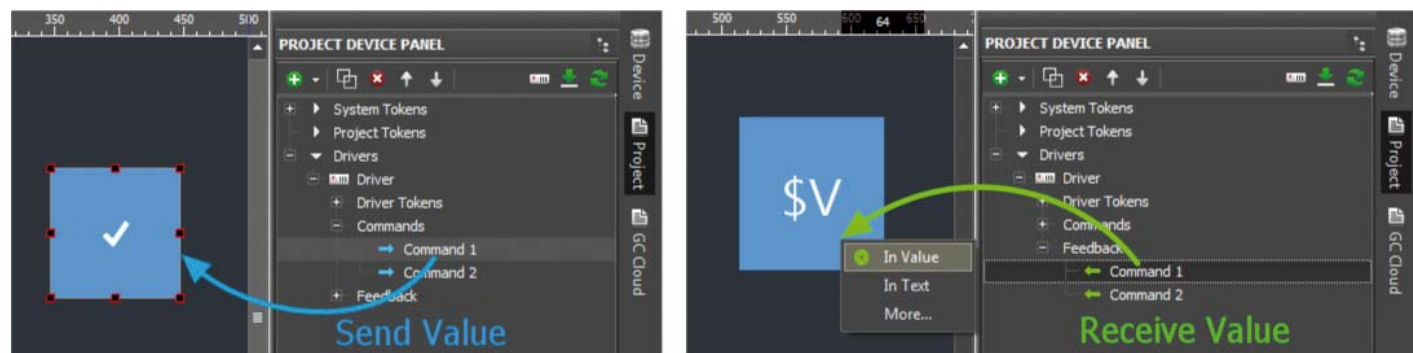
Ɔ[Ɔ]i a ˆgcZk UFY ˆgc i hcbˆ YbUVˆYgˆ Wbfcˆ]b[ˆ ˆcZ hYˆ ]B9@Gˆ\ca YUi lra UhˆcbˆgngYa ˆUgˆk YˆˆUgˆchˆYfˆˆ fXˆdUfˆ hYgˆXYj ]WgˆfUi X|c # ]XYc XYj ]Wgˆza YX]UgYfj Yfgˆk ]hˆ Zˆ ˆˆ hkcˆk UmWˆa a i b]W]hcbEˆ ]Ɔ]X]i a ˆc Yfgˆ U gYhˆ cZ hccˆgˆz gW]dhgˆ UbXˆ Wghca ]nUVˆYˆ ]bhYfZUWgˆ k \ ]Wˆ YbUVˆYgˆ hYˆ YbXi gYfˆ hˆ WYUHyˆ h Yfˆck b i b]ei YZUWˆcZ hYˆUdˆ ]W]hcbˆ k \ ]Wˆ ]gˆUVˆYˆ hˆ gYbXˆ UbXˆ fYW]j Yj Uf]UVYˆ ghUhi gˆXUHuˆj ]Yˆ 9DGB9Hdfc hˆ Wˆ ˆ h]gˆdcgg]VˆYˆ hˆ Wbfcˆ ˆUbXˆ a cb]hcfˆ hYˆ ghUhi gˆ cZ ]bX]j ]Xi Uˆ ˆ i a ]bU]fYgˆz Vˆ]bXgˆz \ YU]h b[ ˆz YhWˆ cbˆ XYj ]Wgˆgi Wˆ Ugˆ ]DUXzˆ]Dˆ cbYzA UWz5bXfc ]Xˆcf Kˆ ]bXck gˆ

Mˆi f YbXWghca Yfˆ ] YfgUWˆa dˆYhˆYgˆc i hcbZcf Wbfcˆ ˆ]b[ˆ UˆXYj ]Wgˆ]bˆcbYUddˆ ]W]hcbˆ



## 3 ÷ · X ÷

7ca a UbXgˆUbXˆZYXVUWˆ WUbbYˆgˆ\Uj Yˆhˆ VYUgg[ˆ bYXˆhˆ ] fUdˆ\ ]W]hYa gˆhˆ Wbfcˆ ˆYeiˆ ]da Ybhˆ !ˆ5 Wˆa a UbXˆ]gˆUgg[ˆ bYXˆhˆ U[ˆ fUdˆ\ ]W]hYa ˆ !ˆ: YXVUWˆ WUbbYˆ ]gˆUgg[ˆ bYXˆhˆ U[ˆ fUdˆ\ ]W]hYa ˆ hˆ X]gdˆ UmhˆYj Uf]UVˆYˆ ghUHyˆ



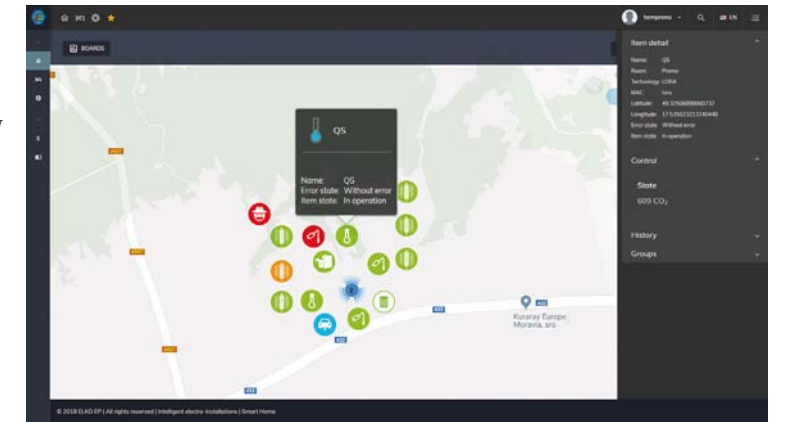
# ELKO Cloud

## Smart Farm

HˆYˆcj Yfj ]Ykˆ a Udˆfbˆ; cc[ˆ YˆA Udgtˆ]gˆ ]XYUˆZcf ZUfaˆ - Yfgˆhˆ j ]Ykˆ hˆYˆgYbˆgˆcfˆ]bˆ hˆYˆXYg]fYXˆ ˆc W]hcbgˆˆ hˆYˆ Wˆci fˆ XYhYa ]bYgˆ hˆYˆ WffYbhˆ ghUhi gˆ flgˆ Uˆ hfUˆ Wˆ ]\ˆ hˆ fYXzcfUb[ˆ Yz[ˆ fYybLˆgcˆ hˆ UhˆhˆYˆ W]hWˆ ghUHyˆ UbXˆ ˆc W]hcbˆ Wbˆ VYˆXYhWˆXˆ UhU[ˆ ] UbWˆ ˆ5Zhfˆ nˆeiˆ dˆ UWˆ UXYj ]Wˆ]bˆ Udcdli dˆzhˆYˆ ghUhi gˆkˆ ]bXckˆ UddYUfgzUbXˆ Ug]XYkˆ ]X[ˆ Yh]gˆX]gdˆ UhˆXˆUZhfˆ hˆ YW]Wzˆkˆ \ ]Wˆ X]gdˆ Ungˆ hˆYˆ XYHUˆ]YXˆ dUfUa YhˆYfgˆˆ Nˆcca lˆci hˆ]bˆ ˆ a Udgtˆ ] fci dˆ XYj ]Wgˆ]bˆhˆ ] fci dg/hˆYbi a VYfˆgdYWˆ YgˆhˆYbi a VYfˆ cZˆ ]XXYbˆ gYbˆgˆcfˆ]bˆ hˆYˆ ] fci dˆ



A cfYˆ]bˆ hˆYˆW]hUc[ˆ i Yˆ Agriculture

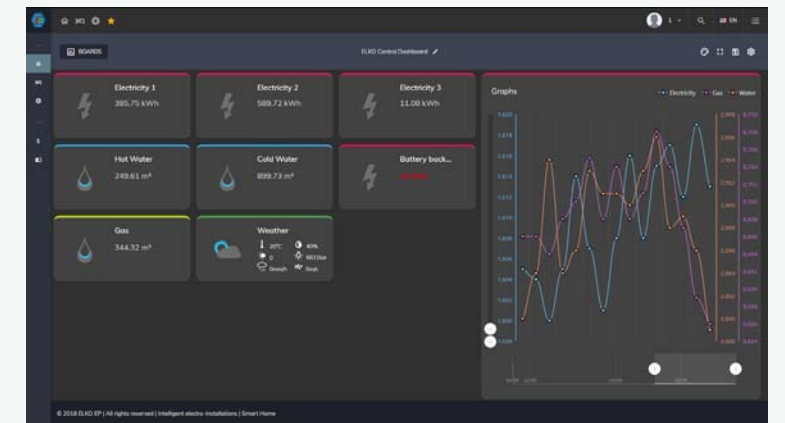


## B ÷ ÷

HˆYˆ7ˆci XˆWbˆ X]gdˆ Umia Yugi fYXˆ j Ui Ygˆ ]bˆ U[ˆ ]j Ybˆ ]bˆ hˆYfj Uˆ ]bˆ XnbUaˆ ]WWUfhgˆˆ hˆYˆ WUfhˆ U l Ygˆ Wbˆ VYˆ gYhˆ Ugˆ bYXYXˆ ˆ bghUhbUyˆci gˆ dck Yfˆ Wbgi a dhcbˆ ]gˆ X]gdˆ UhˆXˆ ]bˆ hˆYgˆz a Yugi fYXˆ i b]hgˆ UbXˆ Wbj YfhˆXˆ hˆ Wfˆ fYbWˆi 8 ]fYWmcbˆ hˆYˆ WUfhˆ U hˆYfgˆcˆ Xˆ Wbˆ VYˆ gYhˆZcfˆ YUWˆ a Yugi fYXˆ j Ui YUbXˆ hˆYˆ U]hcbˆ hˆ VYHUˆ Ybˆ ]bˆ hˆYˆ WgYˆcZYI Wggftj Yfj Ui YLcfˆ gˆcfhZˆ ˆ fl bXYfj Ui YEˆMˆiˆ Wbˆ gYbXˆ Ubˆ GA Gbchˆ W]hcbzYa U]ˆ cfˆ X]fYWm]bgfi Wˆ hˆYˆ gkˆ ]hWˆ U]hcbˆ hˆYˆ gUaˆ YbYkˆ cfˆ ˆ cfˆ VUWYbXˆ gi ddcfhˆXˆ ]B9@GFˆ : / ˆ6I GUMI Urcfgˆ



A cfYˆ]bˆ hˆYˆW]hUc[ˆ i Yˆ Energy management



## Weather

Cbˆ hˆYˆKˆ YUˆhˆ Yfˆ HUvˆ nˆeiˆ Wbˆ ] YhˆhˆYkˆ YUˆhˆ Yfˆ ZcfYWghˆ ZcfU[ˆ ]j Ybˆ ˆc W]hcbˆ fZcaˆ hˆYˆ C dYbKˆ YUˆhˆ Yfˆ dcfHUˆLUgˆ k Yˆ Ugˆ hˆYˆ WffYbhˆma Yugi fYXˆ j Ui Ygˆ Zcaˆ hˆYˆ a iˆ h!ˆ k YUˆhˆ Yfˆ ghU]hcbˆ ˆ5 ]fA 9H9Cˆ fˆhYa dYfUhi fYzˆ \ i a ]X]hˆzˆ I Jˆ gYbˆgˆczˆ ]\ˆ hˆ gYbˆgˆczˆ kˆ ]bXˆ gdYXXˆ UbXˆ j UbYzˆ fU]bˆ Wˆ ˆYhˆfEˆ hˆYˆ gYˆ j Ui Ygˆ UFYˆ hfUbgZffYXˆ i g]b[ˆ hˆYˆ Wbj YfhˆYˆ hˆ hˆYˆ VUWYbXˆ cZ hˆYˆ gYfj Yfˆ ˆ5 Vcj Yˆ YUWˆ j Ui Yzˆnˆeiˆ Wbˆ ˆcbWˆ U] U]bˆ gYhˆhˆYˆ hˆYfgˆ \ cˆ Xˆ UbXˆ Wˆ ˆ Zcfˆ Uˆ bchˆ W]hcbˆ cfˆ ˆ UM]cbˆ ˆ hˆ ]gˆ ]gˆ ]XYUˆ mi gUVˆYˆ ]bˆ hˆYˆ j Uf]ci gˆ YˆXgˆcZ5[ˆ f]Wˆ hˆ fYˆ



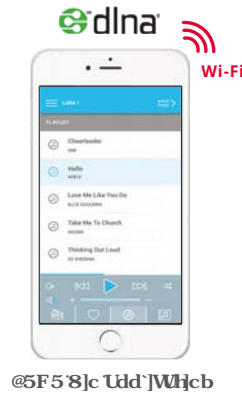
# Hospitality Solution

7UuUc[i Y<cgd]hU]imgc i hcb.  
Y\_cYd"Wa #download



## 3 . z , . . . .

bHy[ fUHY'k ]fY'Ygg'a cXi 'U'ck'g'nei 'W'blfc''@5F5'Vmk ]fY-  
'Ygg' ]B9@G:F: '7cblfc'' F: K 6!&S# 'S'cf'?YnWU]b'' hg'i gYZ''  
k \ ]Y'nei UFY]b'h YVU'h z'gk ]a ]b[ 'dec'zi bUV'YdYcd'Ycb'h Y'  
VYX'cf'cb'm]Znei 'bYYX' V] [ ]f'Vi H'cbg 'Y' Yb'nei 'Xcb%'\_Y'  
5DD'cf'tei W'dUX'g'cb '@5F5' ]g'tc'ga U''Z'f'nei



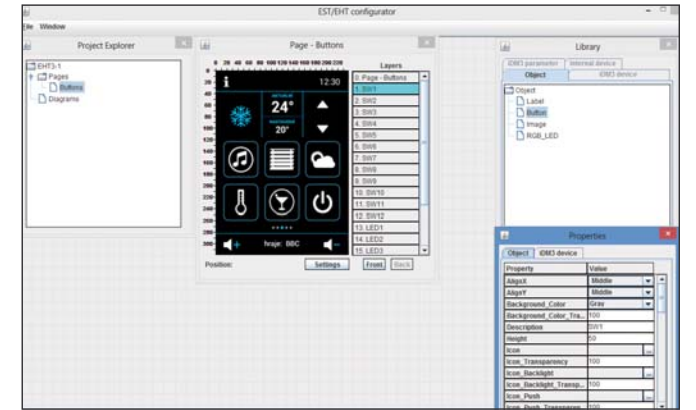
@5F5'8]c U'dd ]W]h'cb



RFWB-20/40

## 3 . BbÇ

7i g'tca ]nY9@?C < cHy' H'i W i b]hX]fYV]m]b ]8A ' 'gc Z'k UFY''  
B'Yk '9< H 'W'b [ i fU'cf'U'ck'g'cd]h'cbU'gY]h]b[ g'cZU''h Y'  
g'WY'Yb'g'cb'h Y'XY' ]W'': cf'YUW' h'ei W 'dUbY' ]g'dcgg]V'Y' h'  
g'Y'h'h Y'g'WY'Yb'z\_ Y'ma U'h] ]z'h'd'Y'g'cZ'W'blfc''YX'XY' ]W'g'Ub'X'  
h'Y' ]W'b Z'f'U'g'nei 'k Ub'h'9'j Y'f'n] ]b[ 'Uh'W'g'tca Y'f'g'f'Yei Y'gh'



]B9@G8] ]hU'\_Ym

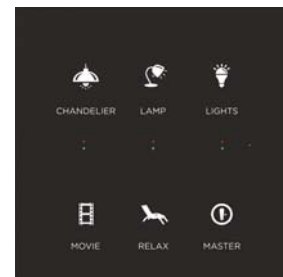
F: 8

## Í . b . °f, 1†1' . ÷

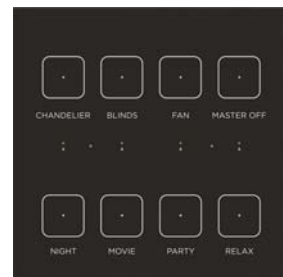
bY'g'8] ]hU'?YmiU'dd' d'fcj ]XY'nei 'b'ck' 'dc'gg]V] ]h'mic Z'cd'Yb'  
nei f'X'cf'j ]U'nei f'ga U'hd'cb'Y'k ]h' B: 7''5dd' Ya i 'UhY'  
F: 8 'W'f'X' 'h' Yb'nei 'W'b' i g'Y'Z'f'X'cf' i b'c'W] ]b[ 'V'ch'  
k Um'W'f'X'Ub'X'f' d'cb'Y''A U]b'Z'Y'U'i f'Y' ]g'Y'bf'Ub'W'nei f'  
f'cca k ]h'ci h'f'Y'W'd]h'cb'W'Y'W] ]b'f'b! ]b'Y'W'Y'W'Y'X'Ub'X' ]c'  
h' h'Y'f'cca 'X]f'Y'W'ni''''

## Z ÷ 3/4 1 . . . .

M'i 'W'b'W'ccg'Y'Z'ca 'h'Y'&'cd]h'cb'g'cZ] 'U'gg'd'Ub'Y'g' '&z' ( 'Ub'X'  
\* 'Vi H'cbg'k ]h' ]'i a ]b'UhY'X'g'na Vc'g'Ub'X'cd]h'cbU' h'm' h'cf' ( z'  
\* 'cf', 'Vi H'cbg'k ]h'ci h'g'na Vc'g''6'ch' 'UFY'U'j U]UV'Y' ]b'6'U'W'  
Ub'X'K \ ]h'Y' ]U'gg'W'ci f'k ]h' U'W'w' i gh'W'ub'X'j ]v'f'uh'cb'Z'Y'X'V'U'W'  
k \ ]Y'df'Y'gg]b[ ''''



\* Vi H'cbgk ]h' g'na Vc'g

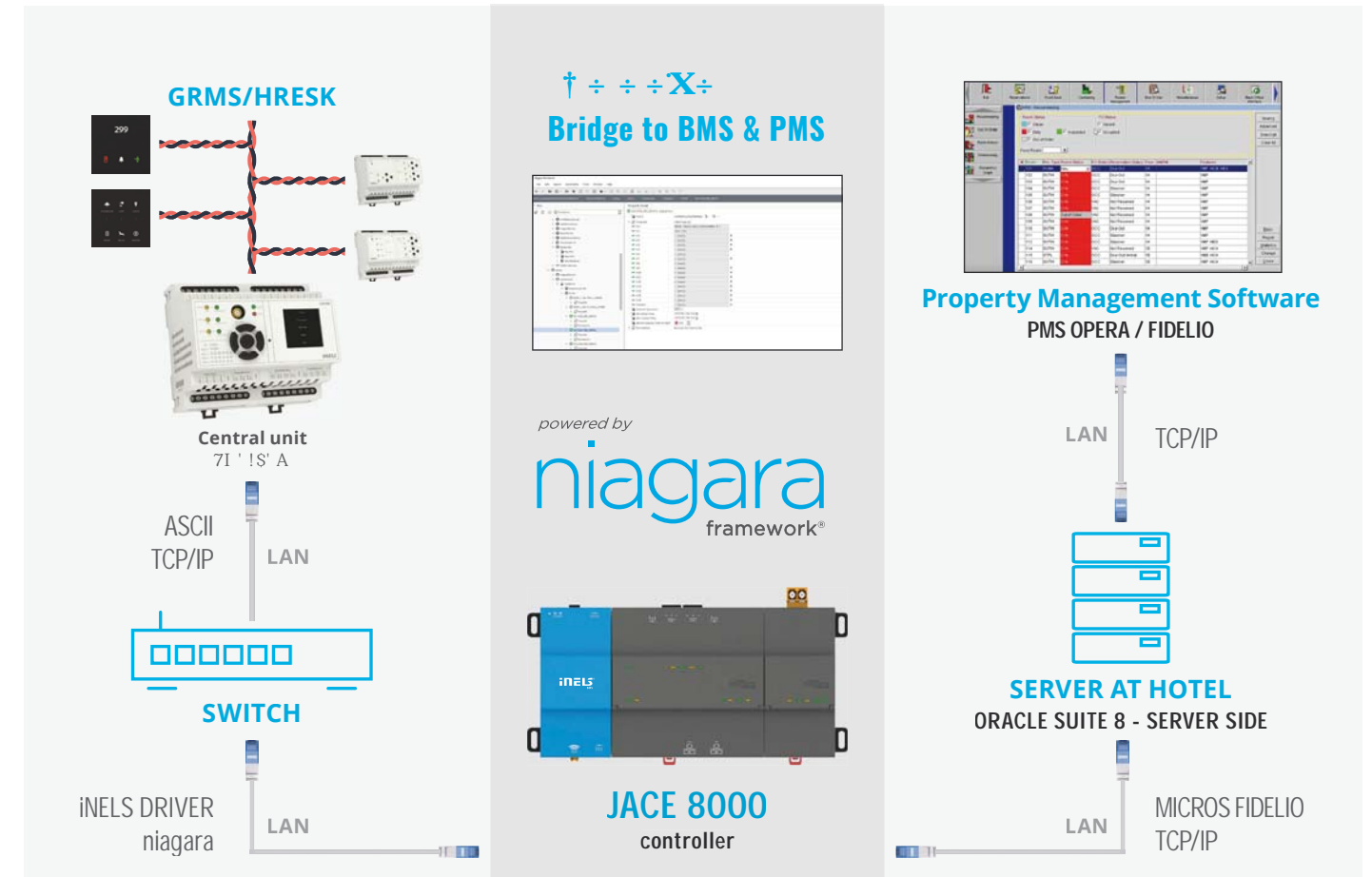


, Vi H'cbg



## 3 . . . . ÷ Ç

5dd'Z'f'GUa gi b[ '<cgd]hU] ]h'miH'U'ck'nei 'W'blfc''a U]b'  
Z'Y'U'i f'Y'g'cZ'f'cca . ] ]h'g'z'g'i h'Y'f'g'z'h'Y'a d'Y'f'U'i f'Y'z'a U\_Y'i d'  
f'cca z'X'cb%'h'X]g'h' f'v' 'X]f'Y'W'ik U'm'cb' 'ced'Ub'cf'XYX]W]h'YX'  
Vi H'cb'cZ'HJ' f'Ya ch'Y'W'blfc''Y''''



## † ÷ ÷ ÷ X ÷ . . . . '1, 3/4 '' ,, 3/4

6i ]X]b[ ' a UbU] Ya Ybh' g'ng'h'Y'a ' B ]U] U'fU' f'tc' k \ ]W'  
]B9@G; FA G/ '< F9G? 'W'b'V'Y' ]b'h'Y' ]f'U'X'Ed'fcj ]XY'g'nei '  
U'dcgg]V] ]h'mic 'V'Y'W'blfc''YX' i g]b[ 'D'f'cd'Y'f'm'iA UbU] Y-  
a Ybh' g'cZ'k UFY' g'c i h'cb' d'fcj ]XYX' V'm' C'f'U'W' f'c'd'Y'f'U'  
cf': ]XY'c'U'g'c'h'Y'f'W'a a i b]W]h'cb' d'f'ch'W'g'g'i W'U'g'  
657b'Y'h' A !6i g'z' A c'X'G'i g'z' @C' B'K' C'F? G'z' ?B'L'z' Y'h'W' 5''  
h'Y'W'blfc'' ]b'W' X]b[ '\ ]g'h'c'f'm'f'f' f'U'd \ ]W' ]g'i U]n'U'h'cb'z'

U'U'fa g'z'U'W'W'gg' h'c' X'U'U'U'g'Y'Ub'X'c'h'Y'f'Z'U'h' f'Y'g'W'b'V'Y'  
j ]g'i U]n'Y'X'V'm'c' HA @ 'cf'nei 'W'b' i g'Y'A ]W'c'g'z: ]XY'c' D'  
X'f' ]Y'f' h'c' g'h'f'Y'U'a 'X'U'U'X]f'Y'W'm'ic' DA G' C'd'Y'f'U# ]XY'c'  
g'Y'f' Y'f' W'a a i b]W]h'cb[ 'k ]h' W'Y'bh'f'i b'b]b[ 'U'h'f'Y'W'd-  
h'cb''5''h'Y'W'b [ i f'U]h'cb'Ub'X' d'fc' f'U'a a ]b[ 'W'b'V'Y'  
\ Ub'X'YX' ]b' B ]U] U'fU' ( '8'Y' Y'cd'Y'f'f'k'cf'V'Y'b'W'c'





## Hotel Guest Room

3 1

CU3-04M

• 7cblfc'i b]hlg'XYg[ bYX'tc 'YbUV'Ya UbUj Y-  
a YbhcZU''hY'Wbc'c[ mihUha UmVY'j[ i Ygh  
fccca g'z]hlg'XYg[ bYX'tc d'fcj ]XY' WYbWihWa -  
Z'fhhk \]Y'fi bb]b[ 'k]h'a Ul ja i a 'Y 'WYbWih  
h'fci [ \ci h'h Y'Vi ]X]b[ "

### By connecting to BMS, you can:

- A cb]l'cf U''g]hY'g'cZU''gng'hYa 'Y'Ya Yb'g'  
Z'fca 'cbY'c'W'h'cb"
- 7cbbY'W]B9@Gk ]h'c'h Y'f'd'f'c'W'g"
- 7fYU'Y'c[ ]W] b'W]cbgVY'h Y'Yb ]bX]j ]X] U'  
W'b]f'c' i b]h'g"
- Cdh]a ]hY'h Y'dY'f'Z'fa UbW'cZ<J57'gng'hYa g

B ÷ , ÷

A UghY' A ' !S&A #9Hk

• 9l hY'f'U'a UghY' A ' !S&A #9Hk U'c'k g'Yl d'Ub-  
g]c'b'cZ'h Y'bi a VY'f'cZ'W'bbY'W'X'dY'f]d\ Y'fU'  
i b]h'g'tc h'Y'W'bhU' i b]h]B9@G' 7l ' !S%A z7l ' !  
S&A 7l ' !S' A' c'f'h'c'Z' f'h'Y'f'V'f'U'W'Y'g'c'Z]b'g]hU-  
'U'h'c'b'6l G'f'Y'U'V'c'i h&l ' &dY'f]d\ Y'fU' i b]h'g."

- DU'f'hcZ'h Y'9l hY'f'U'a UghY' A ' !S&A #9Hk ]g'  
U'g'c'U'V'i g'g'Y'd'U'U'c'f' f'f'DG' L'z'k \]W'g' d'd ]Y'g'  
h'Y'Y'h'c' 6l G'W'bbY'W'X'tc' h'lg'a UghY'f'k ]h'  
&l %5 W'f'f'Y'bh"
- H'Y'i b]h]W'b W'a a i b]W]h'j ]U'h Y'96A gng'hYa '  
V'i g'k ]h' h'Y'7l ' !S%A z7l ' !S&A 'c'f'7l ' !S' A'  
f'f'9H' L'9h Y'f'Y'h'W'bbY'W]c'b"

3/4 ÷ ÷ . . ÷

JA3-018M

- g'Ub i b]h'XYg[ bYX'Z'f'W'b]f'c'Z'f'c'Y'f'  
g'l hY'f'g'zV ]bX'g'z'U'k b]b[ g'z[ U'fU] Y'X'c'f'g'z'  
Y'bh'U'W' [ U'h'g'z'Y'HW
- 7cblfc'g'Y'W'f]W'a c'h'f'g'h'U'c'd'Y'f'U'h'Y' ]b'k'c'  
X]f'Y'W]c'bg'U'X' \]j Y'U'V'i ]H]b' ]a ]h'g'k ]h'W"
- Ci hdi h'-l'g'k ]h'W' ( '5'#57%) "
- Jc' hU] Y'g' S]J '57Z& 'J'87"



## LoRa Gateway with LoRa Network Server

GTW-LNS

- Device for creating your own LoRa network.
- The LoRa Gateway Server can be assigned to thousands of IoT terminal devices communicating on this network.
- The LoRa Gateway has the LoRa receiver / transmitter function and the server, receives / transmits messages Lora and processes it on your own server.
- The antenna provides radiation in all directions.
- The gateway is also designed for outdoor use.



## Waste bin sensor

AirWS-100S/100L/100NB

- H'Y'X'h'W'f' ]bZ'f'a g'U'V'c'i h'h'Y' ' ]j'c'i a Y'  
condition of the container, the waste container, may trigger a requirement to empty it. It also informs you of the actual temperature in the scanning area.
- It has a built-in sensor for opening the lid or for tipping over the waste container.
- With wireless technology and its compactness, the device can be used in a variety of applications.
- The front panel LEDs indicate the status of each output.



## Flood detector

AirSF-100S/100L/100NB

- Is an expansion module for the CU3-04M central unit, designed primarily for controlling hotel rooms.
- Equipped with 22 relay outputs (of which 1x changeover contact - roller blinds, blinds).
- Switching lighting and socket circuits (6A and 10A relay) with common potential at the "COMx" terminal.
- The front panel LEDs indicate the status of each output.



9 ÷ ÷ . . ÷

85' !S\* A

- g'Ui b]j Y'f'g'U'X]a a Y'f'g] !W'U'bbY' U'W] U'c'f'f'c'  
W'b]f'c' h'Y'V'f] \]h'Y'g'c'Z]a a U'V'Y'9C@98 UbX'  
F@' ]\ ]h'g'c'i f'W'g'k ]h' & S]J g' d'd'm
- A Ul ja i a 'd'cgg[VY'c'UX]g% S]J5  
Z'c'f'Y'U'W'W'U'bbY'"
- H'Y'U'W] U'c'f' ]g'Yei ]ddY'X'k ]h' Ub'Y'Y'W'f'c'b]W'  
c] Y'f'W'f'f'Y'bh'U'X'h'Y'f'a U'f'c'h'W'c'b'h'U'g'i ]g'  
c' h'Y'c'i hdi h'Xi f]b[ 'c] Y'f'c'U'X'z'g'c'f'h'W'f]h'z'  
c] Y'f'U'U'h]b[ "
- M'i 'W'b' a U'bi U'm'W'b]f'c' h'Y'c'i hdi h'V'mi g]b[ '  
h'Y'Z'c'bh'd'U'Y' W'b]f'c' 'Vi H'c'bg"

X 3 3 ÷ ÷

FA3-612M

- g'Ui b]h]U'W] U'c'f'f'c'Y'g] bYX'tc 'W'b]f'c' 'Z'ub'W']  
i b]h'g'i g]b[ 'Ub'U'c'[ i Y'f'X] ]h'U' ]bdi h'g'Ub'X'Ub'U'c'[ '  
#f'Y'U'nc'i hdi h'g"
- 5b'U'c' ]bdi h'g'Z'f'h'Ya d'Y'f'U'h' f'Y'z]c' hU] Y'  
c'f' W'f'f'Y'bh'a Y'U'g' f'Ya Y'bh'
- 6i H'c'bg'Z'f'W'g]b[ '#c'dY'b]b[ 'h'Y'U] Y'z  
Z'ub'U'X'f'Y'U'nc'f' 'U'U'h]b[ "
- H'Y'Z'c'bh'd'U'Y' @98g]b]X]W]h'Y'h'Y'g]h]i g  
c'Z'Y'U'W'c'i hdi h'

3/4 ÷ ÷ . . ÷

SA3-022M

- g'Ub Yl d'U'g]c]b'a c'Xi 'Y'Z'f'h'Y'7l ' !S( A '  
W'bh'U' i b]h'XYg[ bYX'df]a U'f]m  
Z'f'W'b]f'c' ]b[ 'c'h'Y'f'c'ca g"
- 9ei ]ddY'X'k ]h' '&&'f'Y'U'nc'i hdi h'g'f'c'Z'k \]W'  
% W'Ub[ Y'c] Y'f'W'bh'U'W] 'f'c' 'Y'f'V' ]bX'g'z'V' ]bX'g'd'
- Gk ]h'W]b[ ' ]\ ]h]b[ 'Ub'X'g'c'W'Y'h'W'f]h'g'  
f'f'5 Ub'X'%S5 f'Y'U'nc'k ]h' W'a a c'b'c'h'bh'U'  
U'h'h'Y' 7CA1 h'f'a ]b'U'"
- H'Y'Z'c'bh'd'U'Y' @98g]b]X]W]h'Y'h'Y'g]h]i g  
c'Z'Y'U'W'c'i hdi h'



## Switch unit for shutters

RFJA-32B

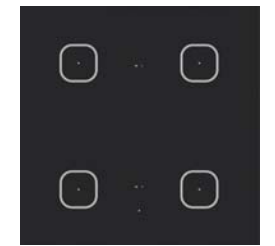
- Advantage is connection with existing shutter switch in installation. You can combine traditional control with wireless.
- Wireless switching element for blinds, barriers, gates, curtains
- Short press of controller - enables blind slats tilting, long press - pull up (or let down) the shutters to the end position.
- Switching unit can be controlled by up to 25 channels (1 channel represents one button on the controller).



## Wireless switch unit

RFSAI-62B

- Switching unit with 2 output channels serves to control home appliances and lighting circuits.
- Switching unit can be controlled by up to 25 channels (1 channel represents one button on the controller).
- It is possible to combine with Controllers or System units iNELS RF Control.
- **Function:** Button, pulsion relay, time function delayed start and return with time settings 2s - 60 min.



## Wireless dimmer switch

RFWD-71

- Wireless glass designed switch with integrated universal dimming component which serves to regulate light sources:  
**R** - classic lamps  
**L** - halogen lamps with wound transformer  
**C** - halogen lamps with electronic transformer  
**ESL** - X]a a U'V'Y'Y'f] mY' W'Y'bh' i c'f'Y'g'W'bh'U'a g'd'  
**LED** - LED light sources (230 V)
- 4 channel switch version allows you to control the integrated dimmer as well as other components of the installation.

# RELAYS

NEW PRODUCTS

7UHc[i Ya cXi UfYYWfcbWXY] JWg  
Y\_cYd"Wa #download



TOP PRODUCT

## Digital relay

### CRM-100

- HAYVfUbXbYk 'a i 'HZA bWfcb X[ ]HU'fYUm 7FA %S\$zk \JW VY'cb[ g]tc hYha YfY'Ung' WWh[ cfrz bXg]hgi gY]b Wbfc''b[ hY Xj YfgYXYj ]Wg'cZnei f\ci g\c X'
- %Z bWfcbg!( 'hja YZ bWfcbgWbfc''YX' VmhYgi dd'nj c HU] YUbX% Z bWfcbg' Wbfc''YXVmhY'Wbfc''WbHUM'
- HUb\_g]tc hYX[ ]HU'X]gd'UniUbXgYHh[ g nei \Uj YhYha YgYhk ]h'ci hUbm a YWUb]W'fc YfUbW'
- Hja YfUb[ YS%g!:- - \ci fg'

### G-H+

- 8[ ]HU'gk ]HW'ha Yf'k ]h' XUmUbX'nyUf'dfc- [ fUa 'UbXgYHh[ ] JU'ga Ufhd\cbYgi ddcf]h[ ] B: 7fUbZgZf'
- Hja Yf'gk ]HW'gk ]HW'b[ 'VUgYX'cb fYU'ha Y ]b XUmUbX'k YY\_ 'a cXY'
- C ]bYgYHh[ ] 'cZdfc[ fUa g]b h'YUdd' ]Wfcb''
- 6UW] d #]bgYf]hcb ]b'hc h'Yd\cbYa Ya cfm Z'f fUbgZf'fc h'YbY] h]ha Yf'gk ]HW''
- Hk c!WUbbY'XYg[ ]bZVc'h' WUbbY'gUFY' dfc[ fUa a UVY]bXYdYbXYbhm'cZ]h Yc'h Yf'

### CRM-91H

- A i 'HZA bWfcb'ha YfY'UmWb VY'i gYXZ'f' Y'YWf]W'Udd' ]UbWgZ'Wbfc''cZ[ ] \hgz\ YUhb[ ] z a chf'gzdi a dgUbXZ]bg
- %S'Z bWfcbgZ'S'ha Y fUb[ YgZ'd' 'ci hdi h%'5' WUb[ Yc] Yf#GDS'Ha i 'h]c HU] Ycf'& SJ gi dd'm
- ) hja YZ bWfcbgWbfc''YXVngi dd'nj c HU] Y
- ( 'hja YZ bWfcbgWbfc''YXVmhY'Wbfc'' ]bdi h
- %Z bWfcb'cZ'UHW]b[ fYUm



M'i Wbbch]gla d'ng]r'd d'fc[ fYggZgc Yj Yb k Y]b 9@C 9D\Uj Ytc 'a c] YZ'fk UfX' Wbg]Ubhmik ]h' 'ci f' d'fcXi Wg' 'K Y'UfY'bck 'd'fc] X'hc ]b]fcXi W'hc' nei 'a cfY' h'Ub'' S'bYk 'hmlYg'cZa cb]h'cf]b[ 'fY'Ung''H YgY'UfY'Ub ]bX]gdYbgUV'Y'dUf]hcZ YUW ]bXi gh]U'cf W'a a YfVU'd'fc'YWfUbX'Yj Yb ]b Yj Yf'm\ci gY'c X'



- 6fUbXbYk ]a d'fc] YXXYg[ ] b
- Focus on industrial applications
- 6[ ] Yf'fUb[ YcZa cb]h'cfYXWffYbh#j c' HU] YfY'Ung'
- bWYUgYX'a YUg] fYa YbhUWfUW'h Ub\_g]tc h'Y' newest components. 2%
- G ]hUVYZ'f) S'#\* S'< nbYhk cf\_g
- 9] hbXX'dck Yf'g' dd'ni& (!& SJ '57#87
- Auxiliary power supply

7UHc[i Ya cb]h'cf]b[ ]  
Y\_cYd"Wa #download



**New range of monitoring relays**

- Voltage relays
- Current relays
- Power factor relays
- Frequency relays
- Reverse power relays
- Speed sensing
- Synchro-check relays
- Synchro check.
- Ground fault relays
- Level switches

# APPS FOR ALL... iNELS Home Control



| iNELS BUS System<br>fVi g'YYWf'c ]bgh'U'hc bL |        |        |        |                        | iNELS RF Control<br>fk ]fY'gg'YYWf'c ]bgh'U'hc bL |           |          |            |                    |
|-----------------------------------------------|--------|--------|--------|------------------------|---------------------------------------------------|-----------|----------|------------|--------------------|
| Android                                       |        | iOS    |        | TIZEN*                 | Android                                           |           | iOS      |            | SAMSUNG Gear S2/S3 |
| iOS                                           |        | TIZEN* |        | iOS                    |                                                   | TIZEN*    |          | TIZEN*     |                    |
| Tablet                                        | Phone  | iPad   | iPhone | Samsung Hospitality TV | iPhone                                            | iPhone    | Smart TV | Smartwatch |                    |
| iHC-TA                                        | iHC-MA | iHC-TI | iHC-MI | iSHC                   | iHC-MAIRF                                         | iHC-MIIRF | iSHC     | iHC-WTRF   |                    |

|                                | Lighting | Blinds | Socket | Garage doors, gates | RGB bulbs, LED strips | Scenes | Heating | Cameras | Air-conditioning | Recuperation | Home appliances (MIELE) | Weather station | Measurement and visualization of energy | Door communicator and Intercom | A/V appliances |
|--------------------------------|----------|--------|--------|---------------------|-----------------------|--------|---------|---------|------------------|--------------|-------------------------|-----------------|-----------------------------------------|--------------------------------|----------------|
| <b>BUS &amp; RF</b>            | ✓        | ✓      | ✓      | ✓                   | ✓                     | ✓      | ✓       | ✓       | ✓                | ✓            | ✓                       | ✓               | ✓                                       | ✓                              | ✓              |
| <b>H ]fX]U]h]g' b]m]f]h]cb</b> | ✓        | ✓      | ✓      | ✓                   | ✓                     | ✓      | ✓       | ✓       | ✓                | ✗            | ✗                       | ✗               | ✗                                       | ✗                              | ✗              |

✓ Supported ✗ Not supported

JB9cG< ca Y7cb]fc'Udd' ]W]h]cbgUFY: F99'hc X'ck b'cUX'U'hc'cf' ]fY'gg'YYWf'c ]bgh'U'hc bL  
UbX'UfY'g' ddcf]h'X'Vmh5bX'fc ]X'CG(' &cf' 'U'Yf'UbX']CG, 'cf' 'U'Yf'



# References

6fcWi fYGYVWjcb'cZFYZfYbWg  
Y\_cYd"Wa #download



## w b 5`a Um#?Uu\_\gUb

- ) !ghUf\`chY`'b 5`a Um?Uu\_\gUb
- ][\hgUFYWbfc`YX`b di V]WUYUg
- a cfYhUb % `SSS`][\hb[ UFYWbfc`  
hfc[ [\h.Y85@dfchW`
- gYi d'gWbYg

## Marriott Marquis 8c\U#EUHF

- ) !ghUf\`chY`'b h.Y8c\U7]miWbHYf
- ][\hb[ `Wbfc`z<J57`Wbfc`z
- a UghYf`gk ]HW`C`:
- (( `ccfgz` - +fccca g% &g ]hYg`  
%`a Y]hb[ fcca g

## u f ÷ ÷ ÷ ÷ ÷ 6i XUdYgh#< i b[ Ufm

- ]B9@G6I G`GngHYa `]g`Wbfc`"b[ "] [\hb[ `
- UbX`hYfFUW!Wc`]b[ #AYU]b[ `]b`h.Y`  
fYghU fUbh
- UXX]hcbU`gk ]HWYX`][\hb[ `VfW]hgUFY`  
Wbfc`YXVm) UMi Urcfg

## " ÷ 8i vU] #l 59

- ][\hb[ `Wbfc`
- WngHU`WUbXY]Yf`
- ghUfmb][\hg\_mWbfc`
- U X]c# ]XYc`gngHYa

## ° ÷ CXYggU#l \_fU]bY

- &] fcca gk ]h`Z `mU lca Uhcb`  
UbXX]gdYHW]b[
- ]b]h[ fUhcb`k ]h`GUa`g`b[ `
- Wb]fU`WbX]hcb]b[ `

## 1 `éB]Bé ]`]bU#Gcj\_U\_JU

- ][\hb[ `Wbfc`
- \YU]b[ `Wbfc`z<J57
- UWWgg`Wbfc`gngHYa`z`  
Wa`YfUgZUf`a



## 1 ä ~ 6fbc #7nYW FYdi V]W

- (!ghUf<`chY`' bhYfbUW]cbU`]b`6fbc
- ][\hb[ `gWbYg]b`h.Y`fYghU fUbz`  
fYWdhcbzk ]bY`g`cd UbX`Yl`hYf]cf`
- Udd`Uj`U]`UV`YZ`f`Ubm[ i`Ygh

## Ç · ÷ ÷ ÷ ÷ G\_\Xb]M]U#l \_fU]bY

- ) !ghUf\`chY`
- %-`Z `mU lca UhX`fccca`g`  
dck`YfYX`Vm]B9@G
- U lca Uh]cb`cZ`][\hb[ `z`  
\YU]b[ `zWfXfYUXYfg
- h.YfY`UFY`G5`!S%&`z`A`!%`SA`  
UbX`K`G6`!(`S`]b`Y]`Yf`mfcca

## z ¾ DfU] i Y#7nYW FYdi V]W

- XYg[ ]bYX`fYg]XYbhU`g`ck`fccca`
- Wbfc`i`b]hg`UFY`d`UFhc`Zh`Y`]b`hYf]cf`
- ghU]`Y`W`bb`YV]cb`k`]h`dfc`YV]cb`  
UbX]`]g]hcf`b`YYXg

## „ ÷ ÷ ¾ ÷ ÷ ÷ 6i XUdYgh#< i b[ Ufm

- 9j`Yfmi`UXX]hcbU`][\hb[ `gci`fW`  
]g`U`gc`Wbfc`YX`Vm]B9@G`gngHYa`  
h.Y`Xy] ]Wg`\`YfY`UFY`Wbfc`YX`  
Vm]F`:`H`i`W`
- :`cf`gk`]HW]b[ `h`YF`:`G5!%6`  
UbXF`:`G5!`\*`A`]gi`gYX`

## · b · 3÷ ?n]Yb]U#7nalfi g

- ) !ghUf\`chY`
- `c`W]hX`W`g`Y`rc` \]grcf]W`  
W]m?`n]Yb]U
- h.Y`][\hg`UFY`Wbfc`YX`Vm]B9@G`  
gngHYa`j`JU`][\hd`Ub`Y`z]l`G6`gc`W`Y`z`  
[ `Ugg`h`Yfa`c`g]Ug

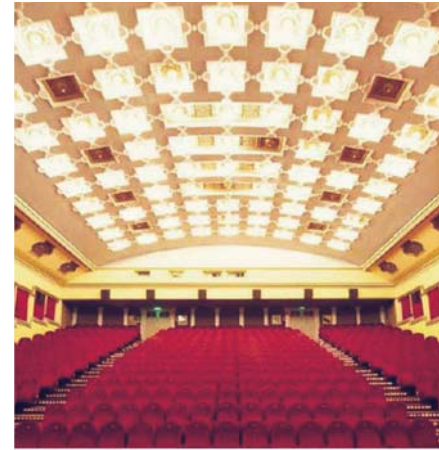
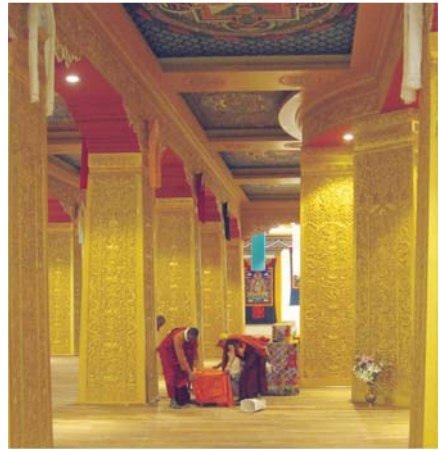
## z ~ ÷ ÷ ?n]Yb]U#7nalfi g

- ) !ghUf\`chY`
- ][\hb[ `Wbfc`"b`h.Y`fYghU fUbz`  
WbZfYbW`\U`zd`UF\_]b[ `zk`Y`b`Ygg`  
UbX`W`ff]Xc`fg



# References

6fcWi fYGYWmcb'cZFYZfybWg  
Y\_cYd"Wa #download



- 1** ÷"÷÷  
**6\i Hbž bXJU**
- ][\hb[ Wbfc`cZ\grcf]W`  
]bhYcf'gYWcbg
  - gWbYg`]]\hUWfX]b[ 'c`  
j ]lgf'cf'fYgYbW
  - gYwf]imgnghya

- b** ÷  
**Bc cj ]WZ7nYW FYdi V]W**
- +' \* dVg@98 <]]\ 6Unk ]h ]b  
fYfc hYX`]]\hb[
  - WbFU`Wbfc`85@ VU`Ugh  
j ]U98A 7
  - Wbfc`cZYUW`rcbYZca`  
hYfci W`dUby`j ]Udd

- 3** ÷3  
**6i XUdYgh#<i b[ Ufm**
- \*`a cj ]Yh YUhfYg
  - 85@ Wbfc`@98`a Uf]]  
fi SS`]]\hb[ ` ]h fYg`
  - dfc`YWcb'gWbYg
  - \YUhb[ `UbX5`#7`Wbfc`

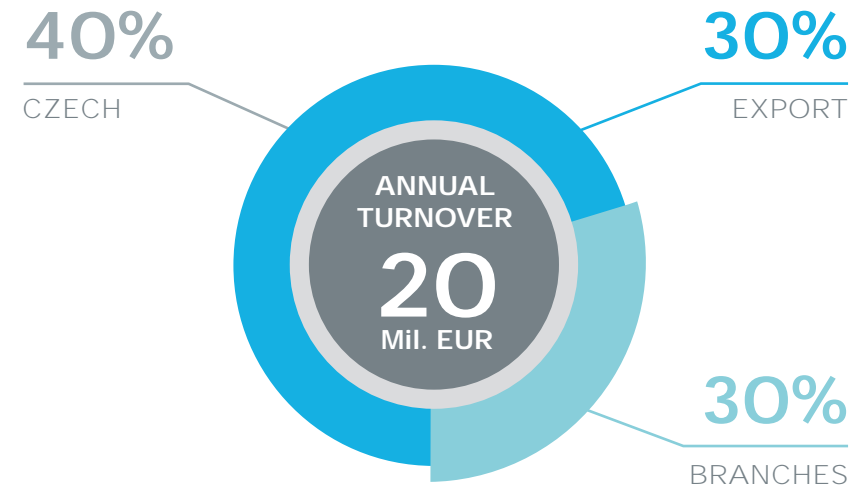


- Hotel Merit Premium**  
**Kyrenia, Cyprus**
- U`fcca gUFYei ]ddYXk ]h`  
ga UfhY`YWfc!]bghU`Uhc b
  - h ]g'lg`Wbfc`YXVmF: G5i b]hg  
hUhgk ]hW`gYha cXYg
  - k \Yb`XYgl[ b]b[ U`gnghya žh`Y`  
Ya d\Uglgk Ug'd`UWXcb`h`Y`  
WbFU`Z`bWcb`fa`5GH9F`gk ]hWL

- 3/4** ÷'z  
**6fUhgUj UzGcj U\_]W**
- h`Y`YbhYVi ]X]b[ ž]bW`X]b[`  
k`UFY`ci`gY`UbXYl`hYf]cf`gdUWgž  
]g`Wbfc`YXVm]B9@G`]bh`]]`Ybh`  
Y`YWfc!]bghU`Uhc b
  - ]B9@G`gnghya`Wbfc`g`  
!%`gk ]hW]b[ `]]\hWfW]hgž`  
!)`X]a`a`UV`Y`]]\hWfW]hgž`  
!@98`F: 6`]]\hWfW]hgž`YhW

- 3/4** 9  
**DfU i Y#7nYW FYdi V]W**
- \UFXk`UFY`F: `7cblfc`
  - WUbbY`a`i`hZ`bWcb`X]a`a`]b[  
UMi`Ucf`F: 85!+@6
  - g]b[ `Y`WUbbY`UMi`Ucf`k`]h`UbUc[`  
ci`hdi`hF: 857!+@6
  - F: `fYa`ch`Wbfc`D]`ch

# FACTS AND STATS & ELKO EP Holding



**16**  
BRANCHES  
OVER THE WORLD

**70**  
EXPORTING  
COUNTRIES

**240**  
EMPLOYEES

**5 000**  
INELS INSTALLATION

**12 000 000**  
MANUFACTURED PRODUCTS

