

Installation Manual for the application iHC-MARF



Contents

1. Introduction 3

2. Installing the application on a mobile telephone with OS Android via the service Google Play 3

3. Installing the application on a mobile telephone with OS Android from a file 4

4. Settings 5

5. Control 13

1. Introduction

The application iHC-MARF (for mobile phones with OS Android) is designed for comfortable control of the RF Control electrical installation using your mobile telephone. This is an RF Control system accessory, and as a part of the iNELS Smart Home Solution, its elegance blends perfectly with any modern home. The menu is divided into clearly structured sections in which the icons indicate individual functions. Here you will also find faster access to your favorite functions, and you will maintain a constant clear view of what's happening in and around your home.

Thanks to iHC-MARF (the "application"), you can perfectly control the function of your wireless RF Control electrical installation. You thus keep complete control over your home lights, appliance switching and heating.

The application only works with the device eLAN RF-003 or eLAN RF-Wi-003. This element must be used in your wireless installation.

- It is designed for devices with OS Android 2.4 and higher.
- It is optimized for devices with a resolution display of 800x480
- The application language follows the language set in the OS Android

Implemented communication with Axis video cameras, thanks to which you can monitor what's going on around your home.

It also enables control for multiple users at once (by entering multiple IP addresses).

It does not enable creation of week-long programming or communicating with temperature actuators.

Downloading

Download the current version at Google Play (under the name iHC-MARF).

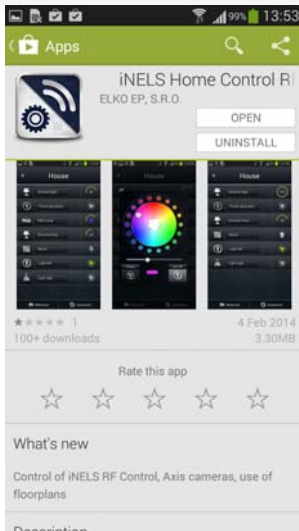
https://play.google.com/store/apps/details?id=cz.elkoep.ihc_marf&hl=cs

Installing the application on the device

2. Installing the application on a mobile telephone with OS Android via the service Google Play

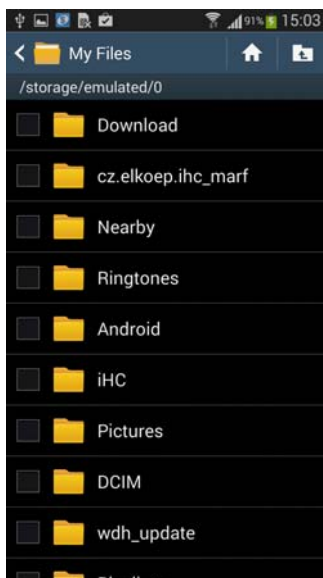


- Connect to the Internet using the mobile telephone.
- Activate the service Play Store or Google Play.
- In the search bar, enter the password "iNELS" and press "Search".
- Select the application "iNELS Home Control RF Mobile" from the list and open the dialog field with information on this application.
- Click on "Install". A message is displayed on permission to access the telephone services. These services are conditional for installing the application. Thus, tap "Accept".
- On the display, first a downloading bar graph appears indicating that the application is downloading to the phone, followed by an installation notification.

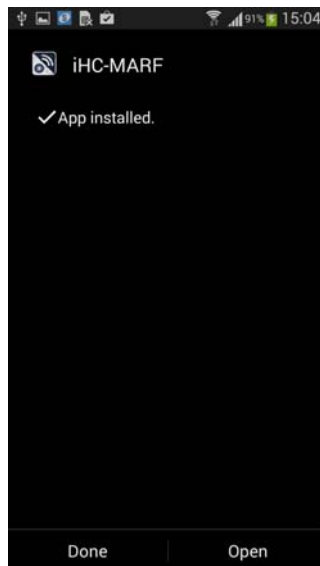
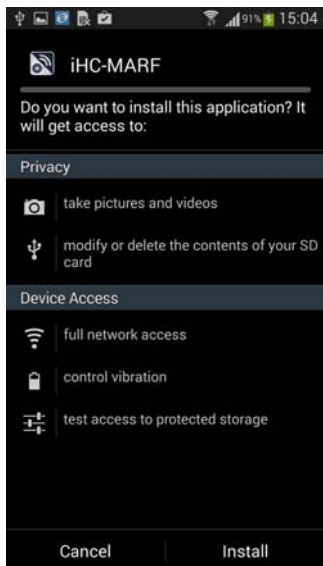


- g) After the application is successfully installed in the phone, instead of the button "Install", the buttons "Open" and "Uninstall" appear.
- h) Installation is complete, go to the "Applications" tab where the icon is located and open the application.

3. Installing the application on a mobile telephone with OS Android from a file

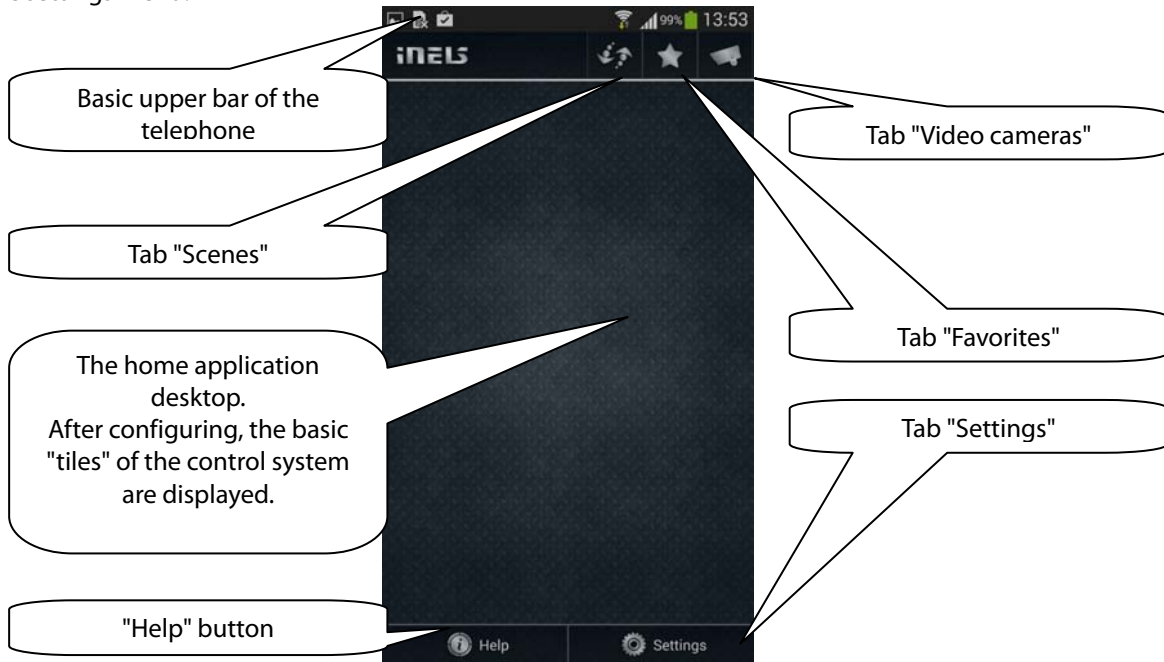


- a) The application can also be installed on a mobile telephone from a file. The application can be downloaded to the PC or the telephone into the given file system.
- b) Using the mobile telephone and tool "File manager", search for the stored application iHC-MARF in the file system within the given directory.
- c) By clicking on the file with the application iHC-MARF.apk, the operating system starts installing the application from the file.
- d) Prior to the actual installation, the OS will ask about access to the provided services necessary for running the application, and displays the "Install" button.
- e) Once the installation is complete, the OS indicates this and directly offers you to open the installed application iHC-MARF.



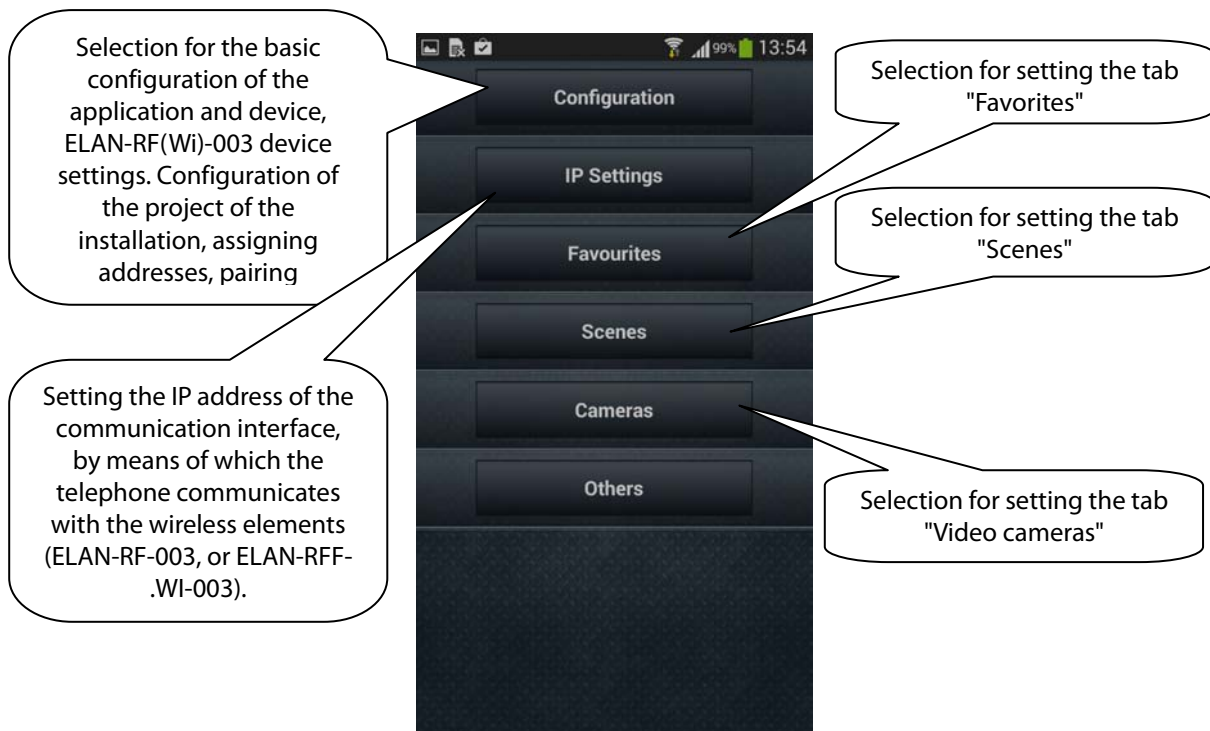
4. Settings

Initial display upon running the application. by pressing the "Settings" button, you bring up the application's basic settings menu.



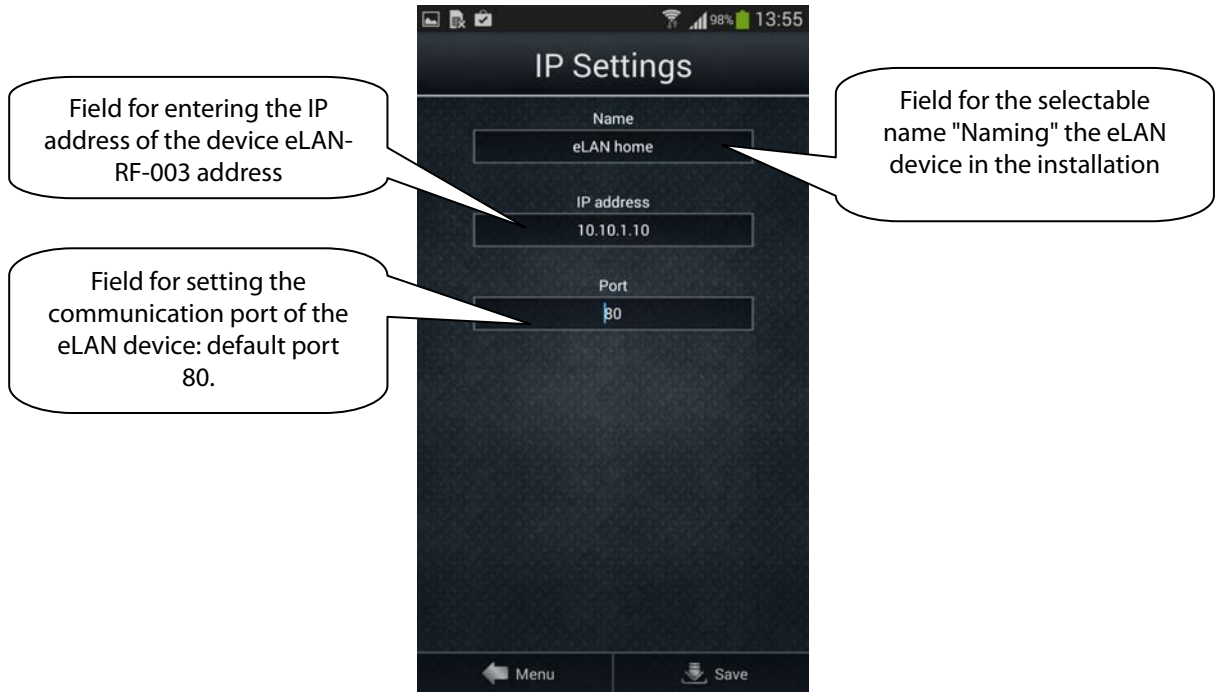
The aim of using the application for controlling the installation is so that after running, it immediately offers control of the electrical installation. To achieve this with the least amount of presses and so that everything required would be offered right from the home desktop, you must first set up and configure the application.

a) Tab "Settings"



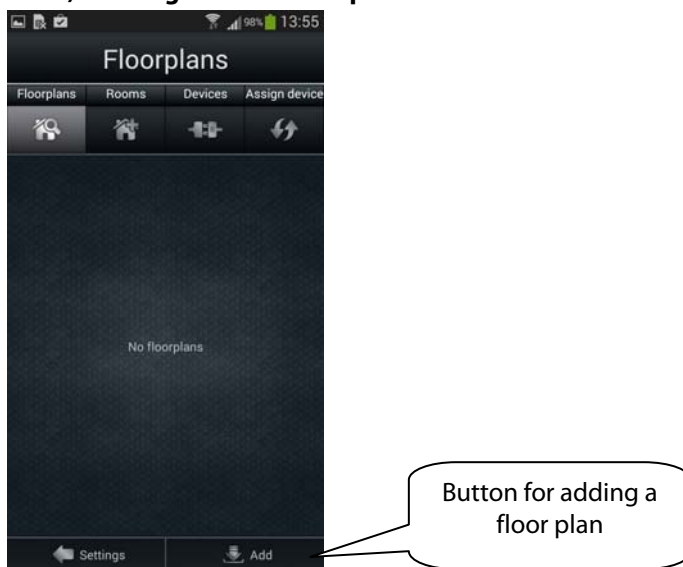
b) Tab "IP settings"

Upon initial configuration, select the "Add" button displayed on the screen. After clicking, you will see the display IP Settings as shown below.



After clicking on save, the application moves to a list of set devices. For the application to run, it is necessary to check the given eLAN, with which the application is to communicate primarily. In this device list, you can have several devices and IP addresses configured. Here you can have one and the same eLAN, but with e.g. two IP addresses, with an internal IP address in a home network, and with a public address for remote communication from anywhere on earth.

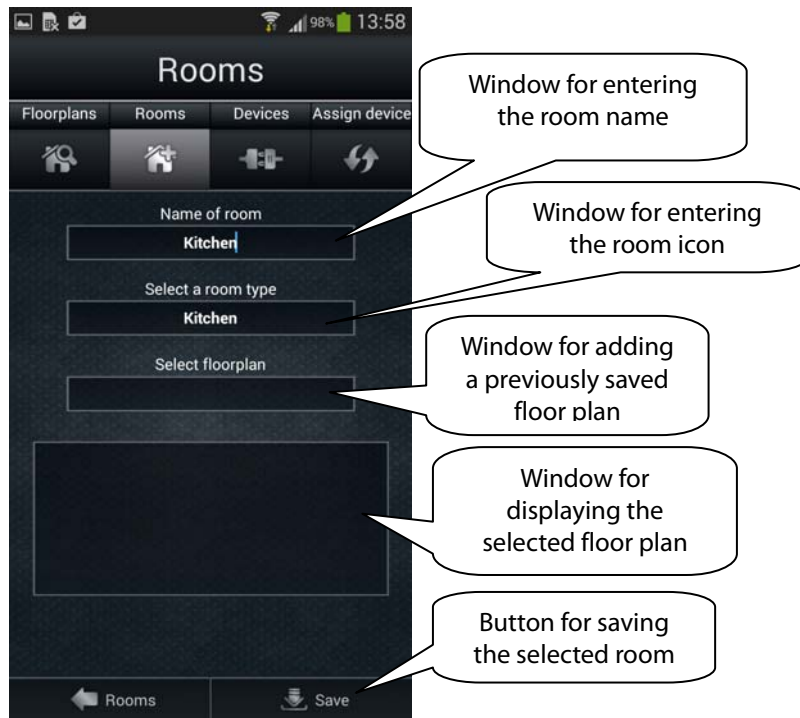
c) Configuration - floor plan



After clicking on "Add", you can add any image you like from your telephone that you later want to have displayed e.g. in the TV application.

Though the floor plan that you select upon creating the room will not be displayed in your telephone application, it is necessary to enter it when creating the room.

Rooms



You can name the rooms as you like by entering your chosen name into the room name field. Choose the type of room based on which icon best fits your needs for the room.

If you only create one room, the device is displayed directly on the desktop.

d) Devices - adding RF actuators



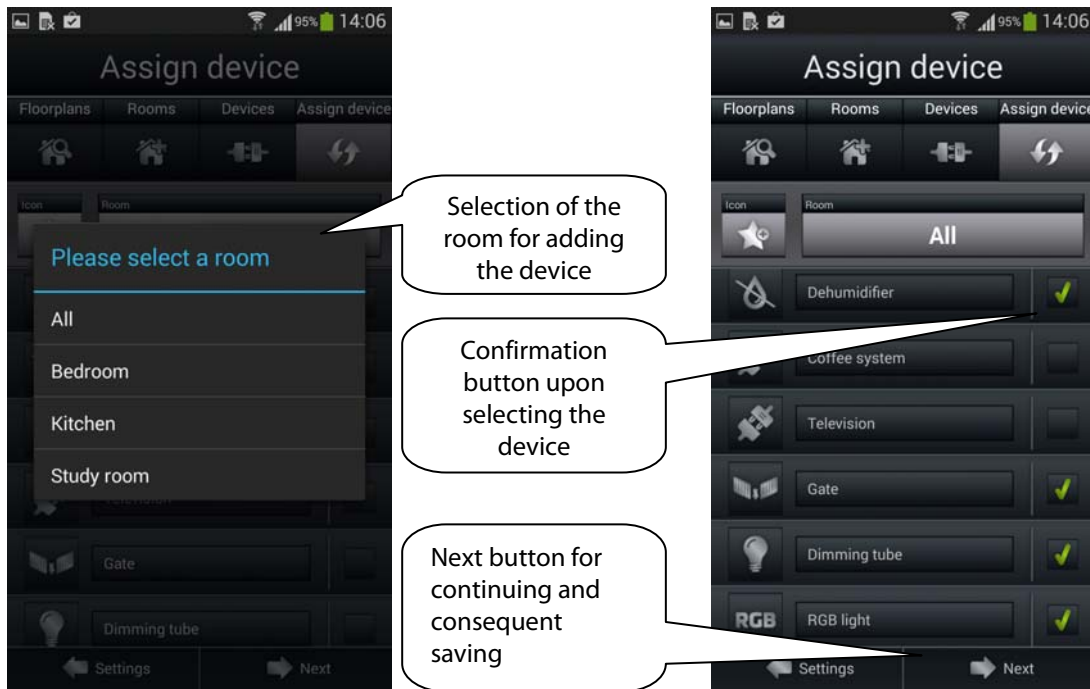
To add a device that you want to control via the application, just fill in the four fields based on the image and save.

Then after clicking on the device icon, the added device will be displayed.

If you want to remove the device, press and hold it until the device disappears. If you only want to rename the device or perform any other modification, tap on it shortly to open its settings.



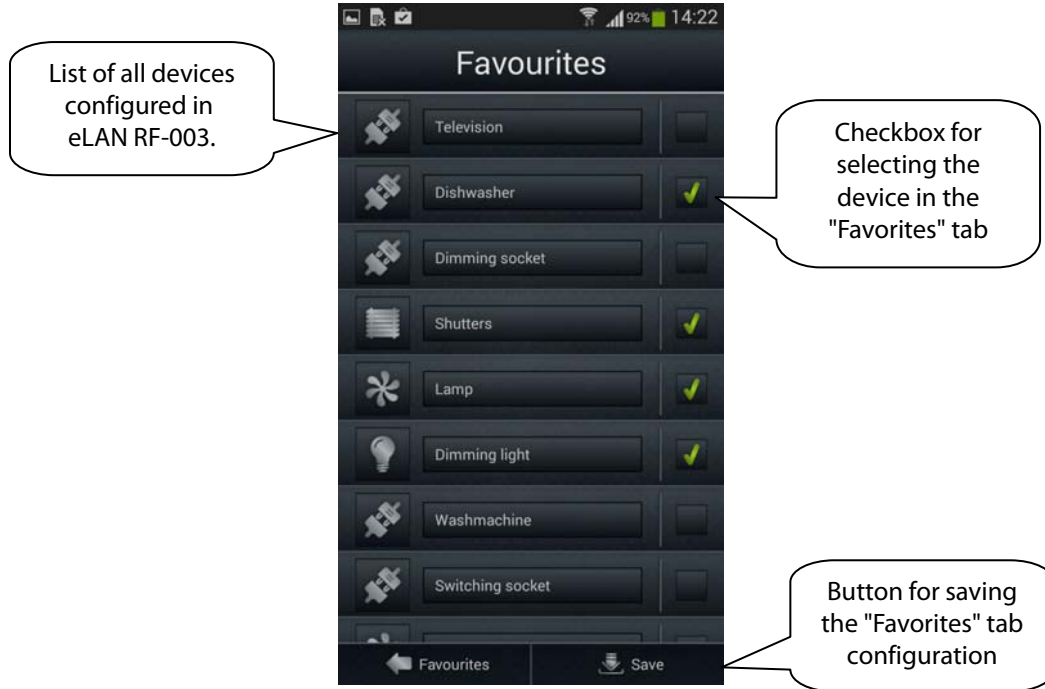
After adding rooms and all devices, you must still assign the devices to the rooms in which they are found, which of course is not a condition, and you can add devices anywhere, e.g. in all rooms. You can do this by clicking on the "Assign" button, where you select the room into which you want to assign the device. Then by tapping the confirmation buttons, you select which elements will be in the given room.



If you've selected a device for a desired room, continue by pressing the "Next" button in the lower right corner for displaying the confirmation screens, where you will confirm the added device by pressing "Save". Do the same to change added devices, with the difference that you are only changing the status of the confirmation buttons when selecting the device.

e) Tab "Favorites"

After pressing, the application desktop appears with the buttons "Next" and "Add". After pressing "Add", a list of configured devices opens, which by checking the selection automatically, then after pressing Save, it is assigned automatically to the list in the "Favorites" tab.

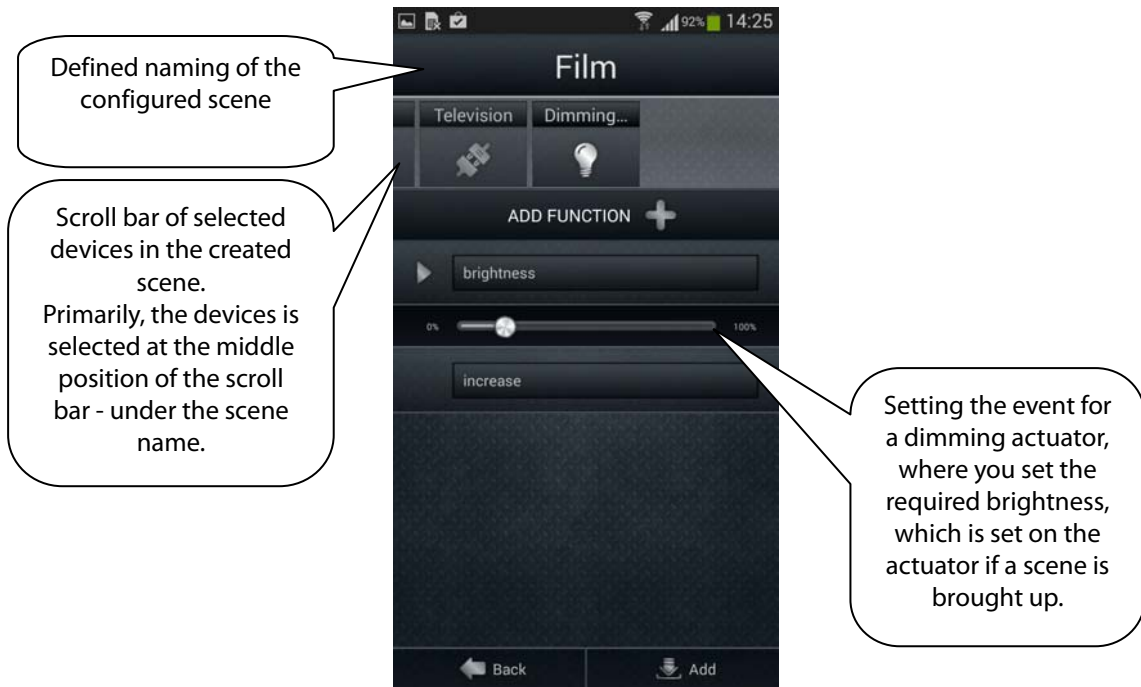


f) Tab "Scenes"

The list of scenes is used to activate the user's predefined scenes, such as all off, all on, all blinds up, all blinds down, etc.

Upon initial configuration, select the "Add" button displayed on the screen. After clicking, you will see the display IP Settings as shown below.



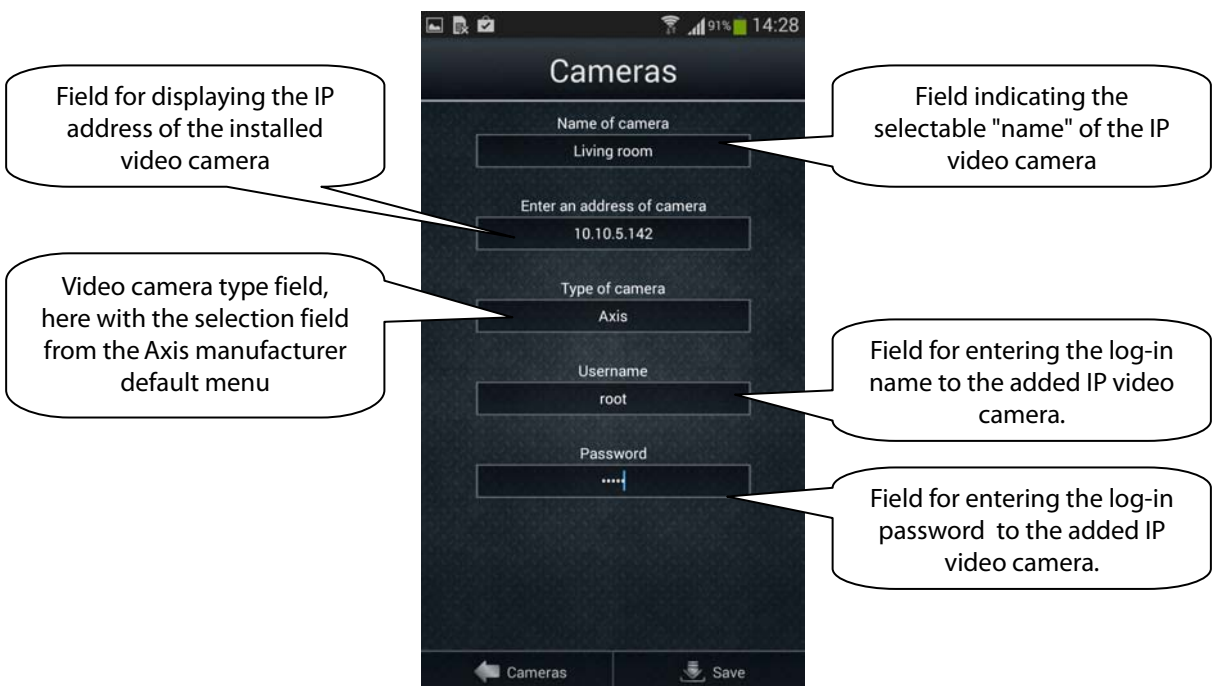


g) Tab "Video cameras"

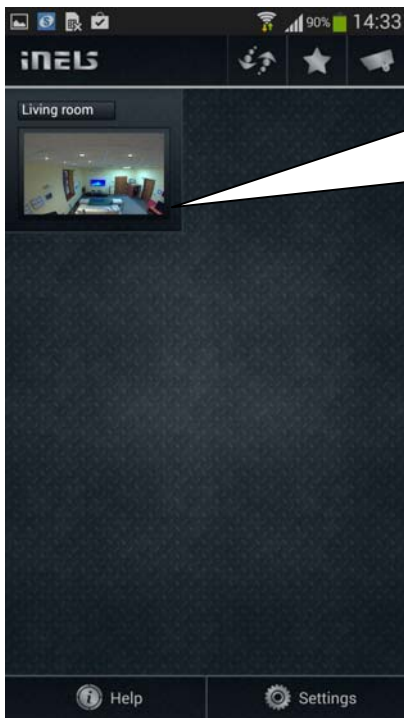
If you wish to have video cameras closer "at hand", you can add video cameras to the quick display - Tiles.

In the iHC application, you can also view the current image (stream) from home security Axis IP video cameras. Upon initial configuration, select the "Add" button displayed on the screen. After clicking, you will see the display with Axis IC camera settings as shown below.

The application allows full screen video camera display, and bringing up the PTZ panel for its control is performed by pressing and holding the relevant video camera view



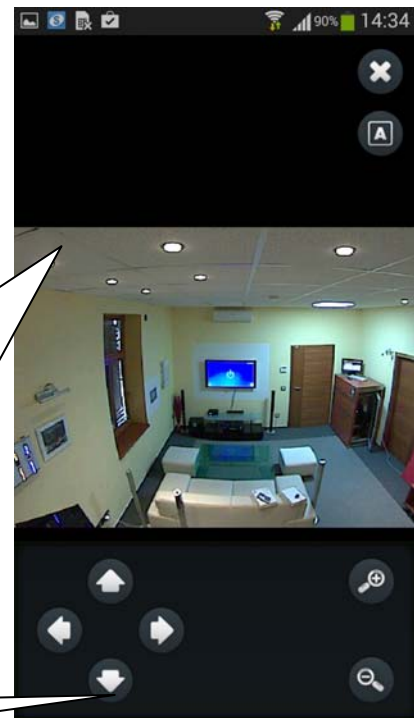
After filling in all the required fields on the display, press Save. The application saves the settings and automatically adds the video camera to the list of devices in the "Video cameras" tab
If you want to permanently delete the camera from the list, press and hold the given list item.



"Video cameras" tab with defined video cameras and video camera view in the tile position on the desktop.

Clicked tile of the defined IP video camera in the iHC application. The video image (stream) from the security camera now automatically reverses according to the telephone's approved

PTZ control elements



5. Control

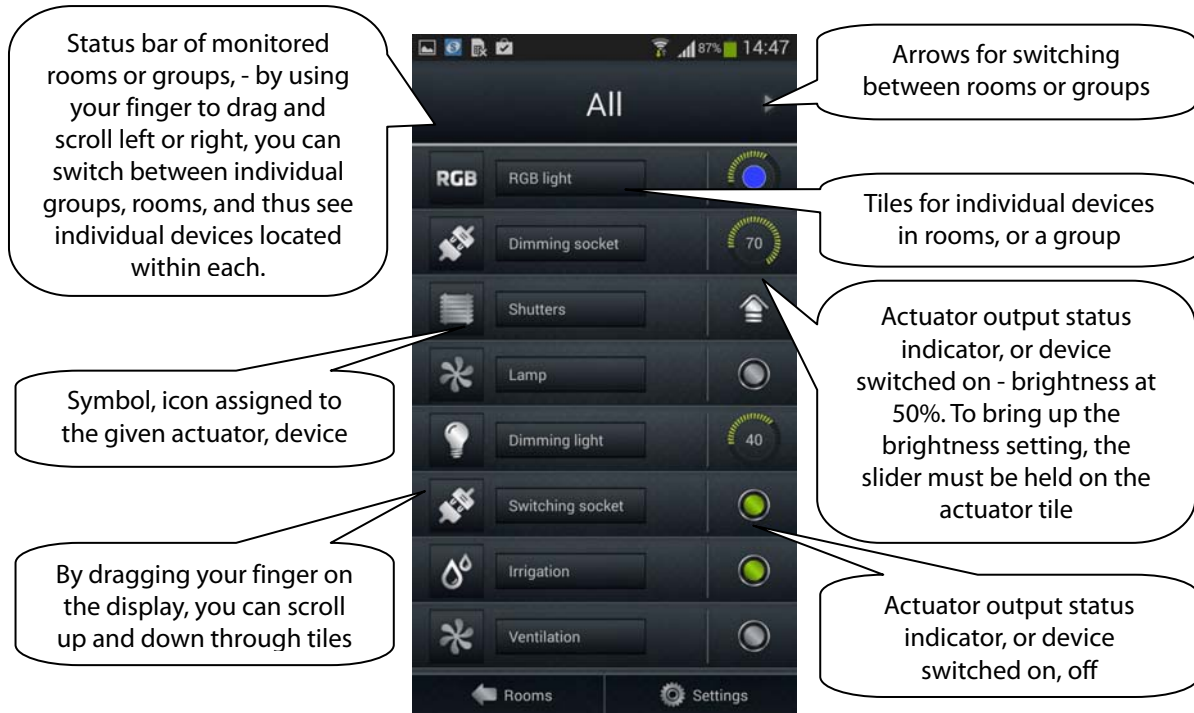
a) Tiles

The main display in the iHC application is formed of so-called "Tiles". This is a general overview of elements, where you can see at first glance according to the icons, either backlit or not, the active icons in the iNELS Home Control intelligent electrical installation.

Based on the previous step "configuration and settings", the initial display shows the application's default tiles, so that they are assigned according to elements in rooms (such as "Kitchen") or in groups (as seen on the display e.g. "Lights or All").

If you wish to go from displaying Tiles to displaying List, just click on the name of the tile, e.g. Lights, and a pop-up menu appears in the given tile ("rooms").





If you press and hold your finger on individual devices, e.g. for a dimmed light, a bar graph appears for setting the brightness of the dimmed light. Two icons are displayed underneath it - brightness increase and decrease, enabling smooth dimming and brightening of your light. Using the arrows, you can open a menu where you can set the precise time of these functions, which you confirm by clicking on the settings icon.

For switching actuators, you can run delayed on/off, and you can tap the arrows to adjust their times.

The blinds actuators can be programmed the same way.

The setting of one time for both directions applies to blinds actuators.

Brightness setting

Buttons for menu, time setting for the given function

By pressing the button, you initiate Brightness increase

By pressing the button, you initiate Brightness increase

Setting the time of Brightness increase/decrease

The screenshot shows a smartphone interface for controlling brightness. At the top, it says 'All' and 'brightness 30%'. Below this is a horizontal slider. Under the slider are two buttons: 'increase' and 'decrease'. In the center, there is a time setting interface with a clock icon, a 'Set' button, and a digital display showing '00 : 00 : 02'. At the bottom, there is a 'Light' control with a light bulb icon and a green indicator light. Navigation buttons for 'Rooms' and 'Settings' are at the very bottom.

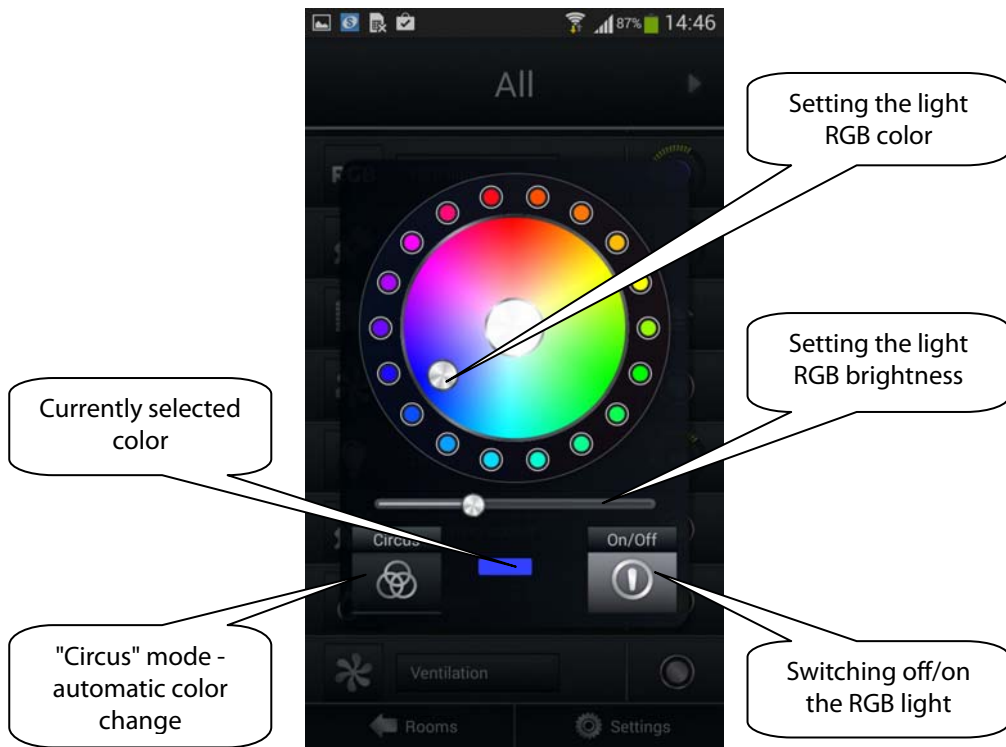
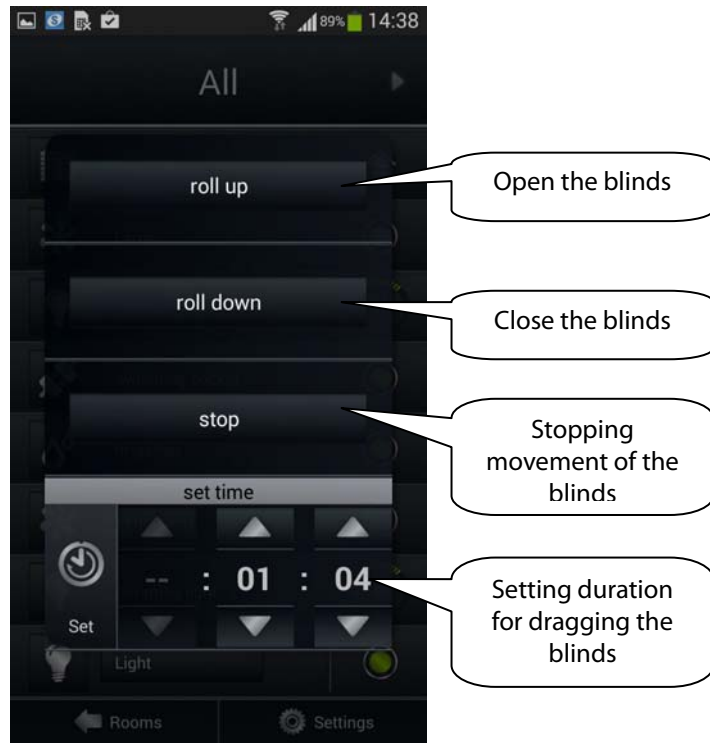
By pressing the button, you initiate Brightness

Setting the time of Delayed off/on

By pressing the button, you initiate Delayed

The screenshot shows a smartphone interface for controlling shutters. At the top, it says 'All' and 'Shutters'. Below this are two buttons: 'delayed off' and 'delayed on'. In the center, there is a time setting interface with a clock icon, a 'Set' button, and a digital display showing '00 : 00 : 02'. At the bottom, there is a 'Light' control with a light bulb icon and a green indicator light. Navigation buttons for 'Rooms' and 'Settings' are at the very bottom.

The time setting for shutter actuators works in both directions



By pressing and holding the RGB actuator, you will see the menu displayed for setting color, brightness and the brightening mode.