



AirSOU-100

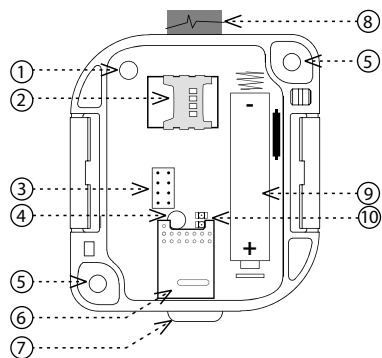
Twilight sensor



Characteristics

- Information about the actual light intensity can be used in the task of maintaining a constant illumination in a given space, where it is possible to regulate the intensity of artificial lighting thanks to the contribution of natural lighting from outside, thereby reducing the energy consumption.
- AirSOU-100 can be used not only in residential projects, but also in commercial office projects or production and warehouse or production halls.
- The AirSOU-100 is recommended to be installed so that the light sensing sensor is facing downwards and not exposed to direct light.
- The scanning range is 1 - 100,000 lux.
- Data is sent to the server from which it can be subsequently displayed as a smartphone, application, or Cloud notification.
- Battery power can be sent to the server when it is powered by a battery.
- The AirSOU-100 is supplied in an IP65 enclosure and can be installed in an outdoor environment.

Device description



1. Tamper
2. NanoSIM slot (AirSOU-100NB only)
3. Programming pins
4. Button SET
5. Mounting hole Ø 4.3mm wall
6. Sensing sensor
7. Light guide
8. Antenna
9. Battery
10. LED

Cloud app assignment

It is done in your Smartphone application. Enter the relevant information on the product cover into the application.

Function

After inserting the batteries, the sensor sends an introductory message containing the measured light intensity.

The sensor scans the light intensity every 2 minutes. After that, it sends a data message of measured values every 60 minutes. In the event of a sudden change in light intensity, it sends the data message immediately.

General instructions

Internet of Things (IoT)

- The IOT wireless communications category describes the Low Power Wide Area (LPWA). This technology is designed to provide full-range coverage both inside and outside buildings, energy-saving and low-cost operation of individual devices. Individual networks - Sigfox, LoRa, NarrowBand - are available to use this standard.

Sigfox network information

- The network supports bidirectional communication but with a limited number of feedbacks. It uses the free frequency band divided by Radio Frequency Zones (RCZ).
 - RCZ1 (868 MHz) Europe, Oman, South Africa
 - RCZ2 (902 MHz) North America
 - RCZ3 (923 MHz) Japan
 - RCZ4 (920 MHz) South America, Australia, New Zealand, Singapore, Taiwan
- Sigfox has more coverage across countries, so it is better suited for long distance monitoring.
- For more information on this technology, please visit www.sigfox.com.

LoRa network information

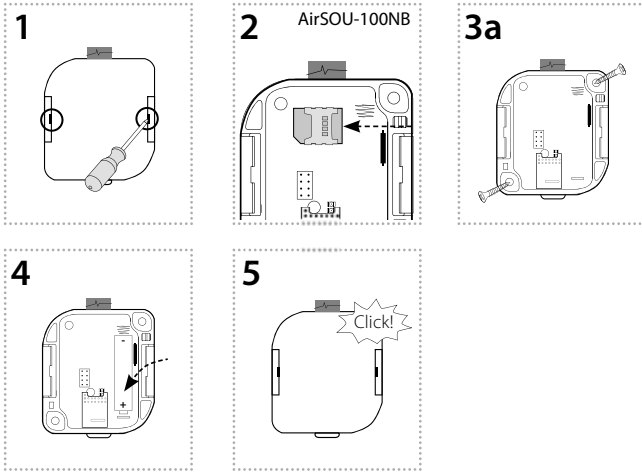
- The network is bidirectional and its communication uses free frequency band.
 - 865 - 867 MHz India
 - 867 - 869 MHz Europe
 - 902 - 928 MHz North America, Japan, Korea
- The advantage of this network is the possibility of freely deploying individual stations in local locations, thus strengthening their signal. It can therefore be used efficiently in company premises or, for example, in local parts of cities.
- For more information on this technology, please visit www.lora-alliance.org.

Information about the NarrowBand network

- The network provides two-way communication and the only one to use the licensed LTE band. Our devices allow band 1 (2100MHz), Band 3 (1800MHz), Band 8 (900MHz), Band 5 (850MHz), Band 20 (800MHz) and Band 28 (700MHz).
- It uses this SIM card technology for each device.
- The advantage of NarrowBand is the use of already built-up grids, which ensures sufficient reception outside and inside buildings.
- For more information on this technology, please visit www.vodafone.cz

Caution for proper operation:

- Products are installed according to the wiring diagram given for each product.
- For proper device functionality, it is necessary to have sufficient coverage of the selected network at the installation site.
- At the same time, the device must be registered in the network. Successful device registration on a given network requires a charge for traffic.
- Each network offers different tariff options - it always depends on the number of messages you want to send from your device. Information on these tariffs can be found in the current version of the ELKO EP pricelist.

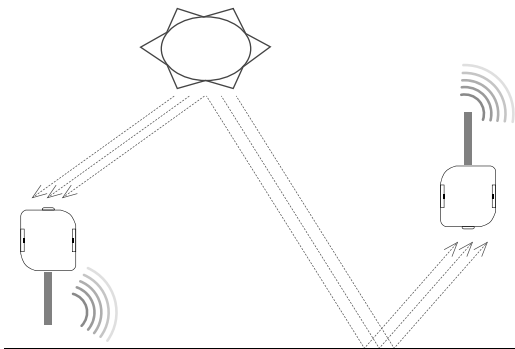


1. Using a flat-blade screwdriver gradually slide it into one groove and the other in the lid and swing open the cover.
2. Only with AirSOU-100NB: Carefully insert nanoSIM (the device must not be energized when inserting or replacing nanoSIM!)
3. The product can be attached in two ways:
 - a) Directly on a flat surface by gluing * - apply a suitable adhesive to the bottom of the base. Place the base in the desired location and let it dry.
 - b) Using a suitable fastener ** by screwing - drill holes into the base with two holes of suitable diameter corresponding to the position of the holes in the bottom of the box. Place the base at the desired location and attach it with suitable bonding material according to the substrate.
4. Insert the battery into the sensor and check correct location (the sensor functionality message is sent to the application when the battery are inserted).
5. Replace and snap the front cover. When closing, the handles have to be snapped to their original position.

* The glue must meet the optimal conditions for product placement (influence of temperature, humidity ...)

** For example, a screw or screw of max. Ø 4 mm can be used as a suitable fastener material, 13 mm (distance to the partition in the box) must be added to the required length for attachment to the substrate.

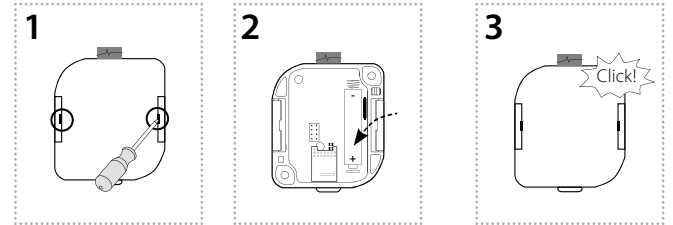
Placement recommendations



- For the correct operation of the sensor, it is necessary to eliminate all disturbing light sources in the sensed area.
- Before mounting, check the range and location of the product and the antenna. Ensure the correct location - see Warning.
- The sensor is suitable for outdoor use. Operating conditions are consistent with conventional chemically non-aggressive environments.
- The recommended working position is vertical; the light guide should point downwards or upwards.
- For proper functionality, the light guide should be kept clean and uncovered (occasional cleaning of the light pipe without the use of chemicals).

Inappropriate location

- Places where distortion may occur (the light pipe must not be illuminated by direct light) - below the lamp, where there is a sudden change in lighting intensity (e.g. flashing advertising), etc.
- Very dusty environment.
- In the case of a light guide installation, the light guide should not be exposed to weathering (sensing distortion may occur due to rain / snow).



1. Using a flat-blade screwdriver gradually slide it into one and then the other groove in the lid and swing open the cover.
2. Remove the discharged battery and insert a new battery into the holder. Beware of polarity. Both LEDs will flash 3 times (see device status indication).
3. Replace and snap the front cover.

Notice:

Only use batteries designed for this product correctly inserted in the device! Immediately replace weak batteries with new ones. Do not use new and used batteries together. If necessary, clean the battery and contacts prior to using. Avoid the shorting of batteries! Do not dismantle batteries, do not charge them and protect them from extreme heating - danger of leakage! Upon contact with acid, immediately rinse the affected area with a stream of water and seek medical attention. Keep batteries out of the reach of children. Batteries must be recycled or returned to an appropriate location (e.g. collection container) in accordance with local legal provisions.

Restart

- Open the cover. Power interruption (remove the battery from the device).
- Press SET> 1min.
- Connect power (insert battery). Close the cover.

Safe handling



When handling a device unboxed it is important to avoid contact with liquids. avoid unnecessary contact with the components of the device. Do not touch the metal objects inside the unit.

AirSOU-100S AirSOU-100L AirSOU-100NB

Photo sensor parameters

Light measurement range:	1 - 100 000 lx
Detection angle:	100°

Power supply

Battery power:	1x 3.6V LS 14500 Li-SOCl ₂ AA		
Battery life:	max. 5 years	max. 3 years (Depending on settings)	
External power supply:	5- 12 V DC (on terminal)		
Supply voltage tolerance:	+10 %; -15%		
Standby consumption:	0.2 mW		
Transmitting power consumption:	250 mW	150 mW	850 mW

Setting

Setting:	Using a message from the server, the programming cable
Battery status view:	message to the server

Control

Control:	button (Communication test) Tamper
----------	---------------------------------------

Communication

Protocol:	Sigfox	LoRa	NB-IoT
Transmitter frequency:	RCZ1 868 MHz	868 MHz	LTE Cat NB1*
Range in open space:	Approx. 50 km**	Approx. 10 km**	Approx. 30 km**
Transmission power (max.):	25 mW / 14 dBm	25 mW / 14 dBm	200 mW / 23 dBm

Other parameters

Working temperature:	-30...+60°C (Pay attention to the operating temperature of batteries)***		
Storage temperature:	-30...+70°C		
Operation position:	vertical		
Mounting:	glue / screws		
Protection degree:	IP65		
Dimension with antenna:	158 x 62 x 34 mm	112 x 62 x 34 mm	158 x 62 x 34 mm
Weight:	108 g (without battery)		

* Depending on network coverage

** Multiple frequency bands of B1 / B3 / B5 / B8 / B20 / B28

*** Pay attention to the operating temperature of batteries -60...+85 °C

Read the operating instructions before installing the device and putting it into operation. Instruction manual is designated for mounting and also for user of the device. It is always a part of its packing. Installation and connection can be carried out only by a person with adequate professional qualification upon understanding this instruction manual and functions of the device, and while observing all valid regulations. Trouble-free function of the device also depends on transportation, storing and handling. In case you notice any sign of damage, deformation, malfunction or missing part, do not install this device and return it to its seller. It is necessary to treat this product and its parts as electronic waste after its lifetime is terminated. Before starting installation, make sure that all wires, connected parts or terminals are de-energized. While mounting and servicing observe safety regulations, norms, directives and professional, and export regulations for working with electrical devices. Do not touch parts of the device that are energized – life threat. To ensure the transmission of the radio signal, make sure that the devices in the building where the installation is installed are correctly located. Unless otherwise stated, the devices are not intended for installation in outdoor and damp areas, they must not be installed in metal switchboards or in plastic cabinets with metal doors - this prevents transmission of the radio frequency signal. iNELS Air is not recommended for controlling life-saving instruments or for controlling hazardous devices such as pumps, heaters without thermostat, lifts, hoists, etc. - radio frequency transmission may be overshadowed by obstruction, interference, transmitter battery may be discharged etc., thereby disabling the remote control.

Device states

	AirSOU-100S	AirSOU-100L	AirSOU-100NB
Unit initialization	Indication		
Start	3 x R + G blinks power supply (external or battery), reset unit		
Search for BTS * 2)	2 x flashes R (2xR _ 2xR _ ...)	x	Search availability BTS Connection to the network
SIM ERR *2) ERR *2)	5 x flashes R (repeatedly)	error MAC / error MODULU / error SIM SIM Error - cannot be loaded (SIM card insertion and rotation check) / or NB-IoT MODULE error	
Successful network connection * 2)	1 x flashes R	start unit ok	
Measurement	Indication		
Tamper	without indication	opening the cover	
SET button short press (> 2s)	1 x flashes G	test, cancel, „long press“	
SET button longer press (> 2s / <5s)	2 x flashes G	setting mode (signaling of measurement)	
Measurement signaling * 1)	1 x flashes G	light measurement	
Communication	Indication		
Communication	1 x flashes R	sending / receiving data	
Other known states	Indication		
Does not respond to the SET button	any LED lights	it is necessary to disconnect the power supply (external or battery), after 60 seconds after the LED goes out, insert the battery	
The unit is still in reset	still indicates start	the battery may be discharged	
The unit does not respond even after removal insert the battery	without indication	a discharged battery or a damaged product	

When the tamper is pressed, the LED is turned off!

* 1) Indicates only when you press SET> 2 s (setting mode)

* 2) Planned

Note:

R... LED red

G... LED green